

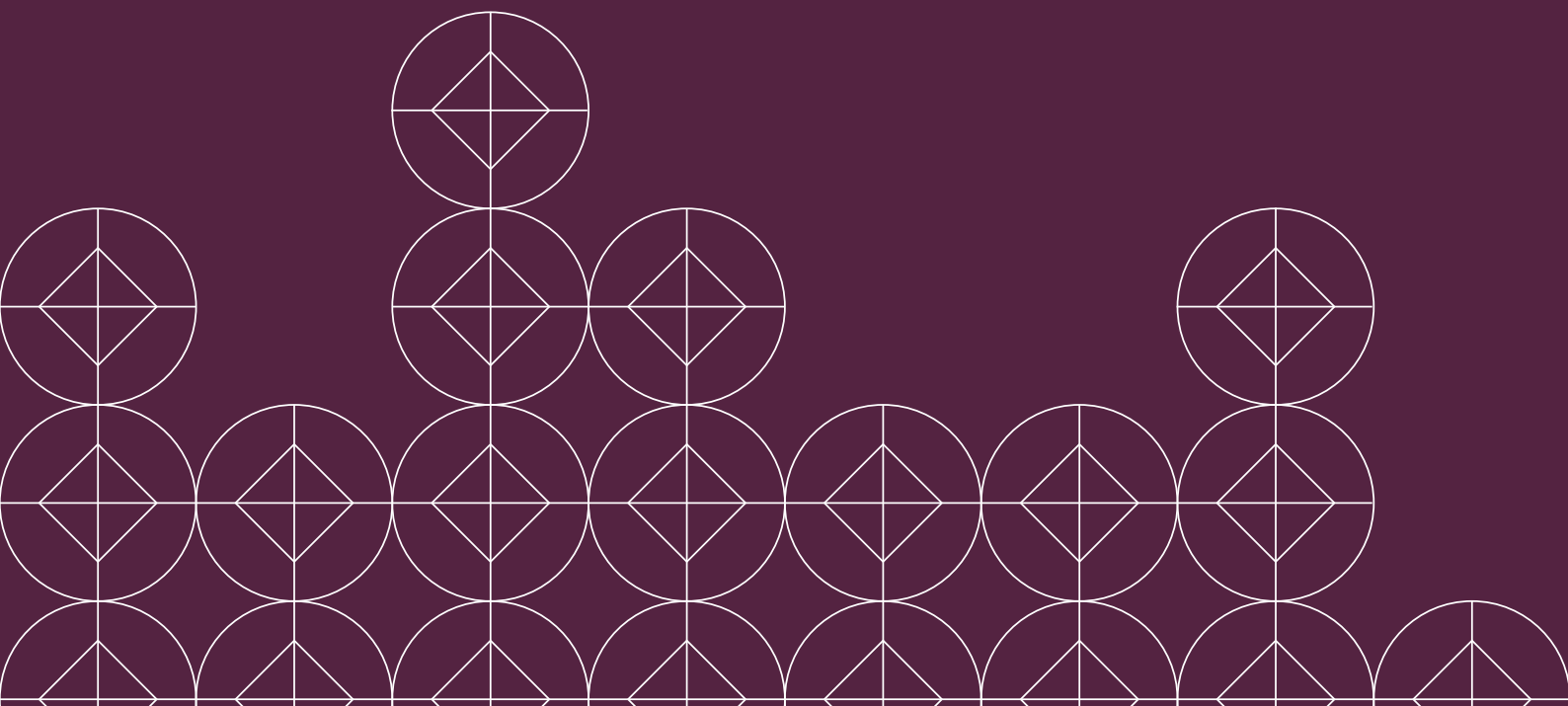
H

HECKMONDWIKE

MANUFACTURER OF HEAVY CONTRACT FIBRE BONDED CARPETS

MADE IN THE UK SINCE 1967

Heckmondwike have been manufacturing heavy contract fibre bonded carpets since the launch of the popular Iron Duke product in 1967. With the introduction of Supacord in 1973, Heckmondwike commercial carpets have been used within education buildings for well over forty years, with the company now considered the Education sector's number one carpet provider.



FIBRE BONDED CARPETS AND TILES

Supacord	10
Broadrib	14
Hobnail	18
Iron Duke	20
Wellington Velour	22

CREATIVE RANGE CARPET AND TILES

Odyssey	26
Array	33
Montage	38
Night Sky	40

ENTRANCE AND TRANSITION CARPETS AND TILES

Battleship/Hippo	44
Dreadnought	48
Diamond	50
Vanquisher	52
Zephyr	54
Sticks and Stones	56

TUFTED CARPET RANGE

Pure care	60
Total care	62

CLASSROOM LOOSE LAY MATS

Wellington waffle backed	65
Pure care	65
Total care	65

LOGO ENTRANCE RANGE

Diamond	67
Fusion range	68

SPORTS FLOOR PROTECTION

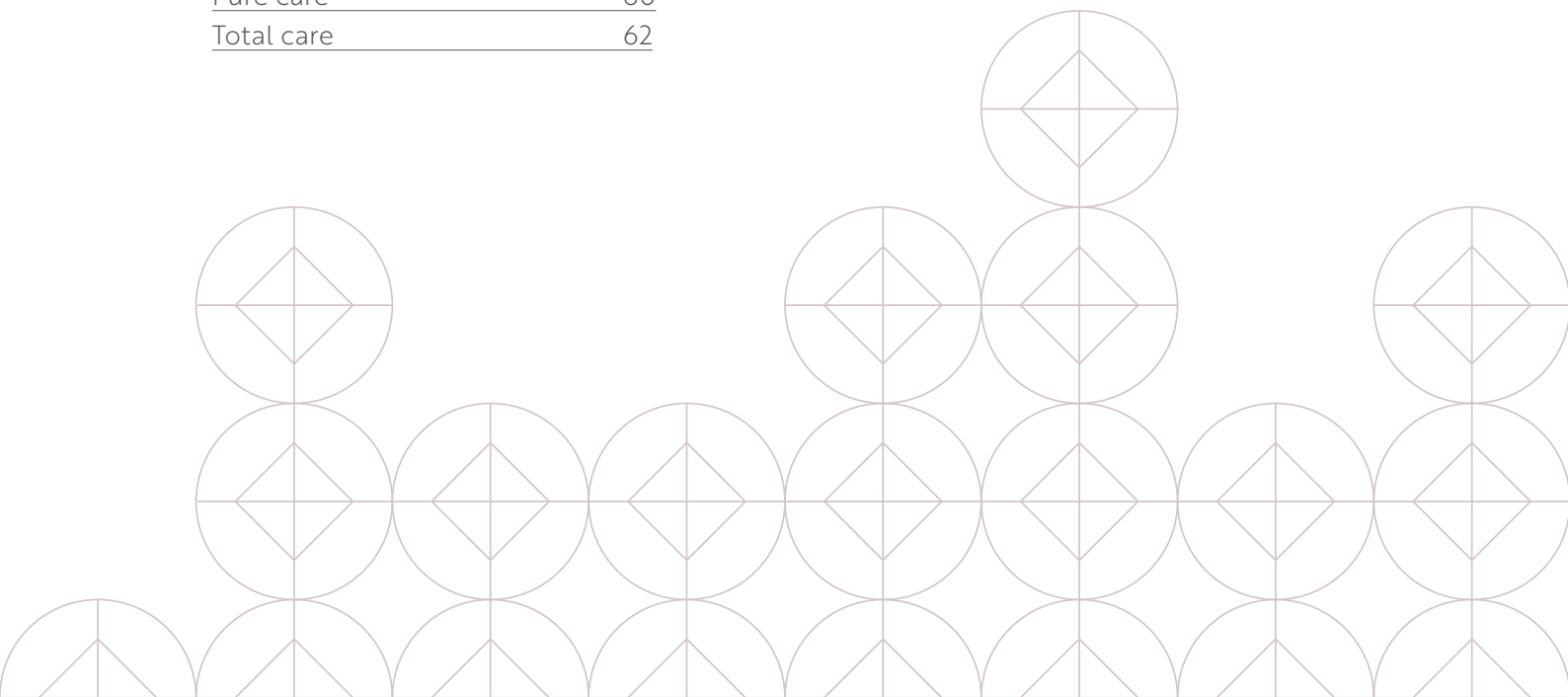
Expo Tile	70
-----------	----

TECHNICAL

72

CONTACTS

74





HECKMONDWIKE AND THE ENVIRONMENT

Our factory location in the heart of Yorkshire is a daily reminder of the need to protect and preserve the environment. It's why we make sure everything we do and everything we use in the manufacture of our carpets has as little impact as possible on the world around us. We keep a close eye on our activities and objectives to check we're staying true to our principles. And when we see an opportunity to make improvements, that's exactly what we do.



OUR ENVIRONMENTAL POLICIES

Manufacturing

The Heckmondwike factory is fully accredited to BS EN ISO 14001: 2004 and appropriate industry codes of practice for sustainability, alongside existing quality, health, safety and business management systems.

Regeneration

We actively encourage waste reduction, re-use and recycling in all our manufacturing activities and through the life cycle of our products. The result is a reduction in waste and the consumption of raw materials.

Responsibility

What waste arises from our manufacturing process is managed and disposed responsibly in line with regulations and industry best practice. For a full copy of our environment policy, please visit our website: www.heckmondwike-fb.co.uk

Certification

Certification of Environmental profiles

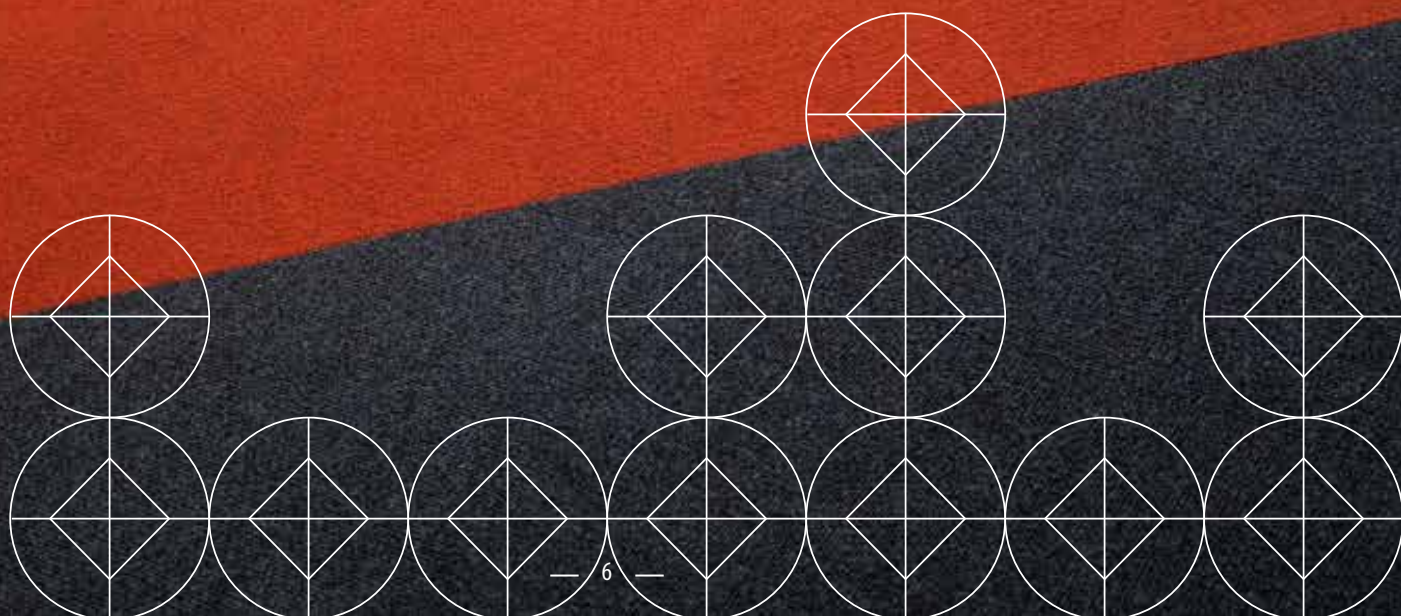
Following individual assessment, Supacord has been awarded a BRE A+ certification for use in schools and offices. For a full list of all products tested and the results, please visit: www.greenbooklive.com

Environmental Management system

Heckmondwike FB has been BS EN ISO 14001:2004 certified since June 2005. This reflects our commitment to minimise our company's impact on the environment.



DESIGNED WELL FOR
EVERY SECTOR





EDUCATION

Educational establishments are perhaps the ultimate test for any floorcovering and carpet tiles.

Our durable fibre bonded carpets are ideal for classrooms, corridors, offices and common rooms. The wide spectrum of colour and texture within the Heckmondwike range allows the designer choice when working within wayfinding, nurturing through colour or wellbeing design briefs.

From the smallest village school to the largest metropolitan university, Heckmondwike has provided flooring to all for over 40 years helping to create the perfect environment for learning.



FIBRE BONDED

SUPACORD

BROADRIB

HOBNAIL

IRONDUKE

WELLINGTON VELOUR



- BRITISH MADE
- WILL NOT RAVEL OR FRAY
- ANTISTATIC
- ANTI-SLIP
- THERMAL PROPERTIES CONSERVE HEAT
- ACOUSTIC PROPERTIES REDUCE NOISE POLLUTION
- LOW MAINTENANCE COSTS
- LOW INSTALLATION COSTS

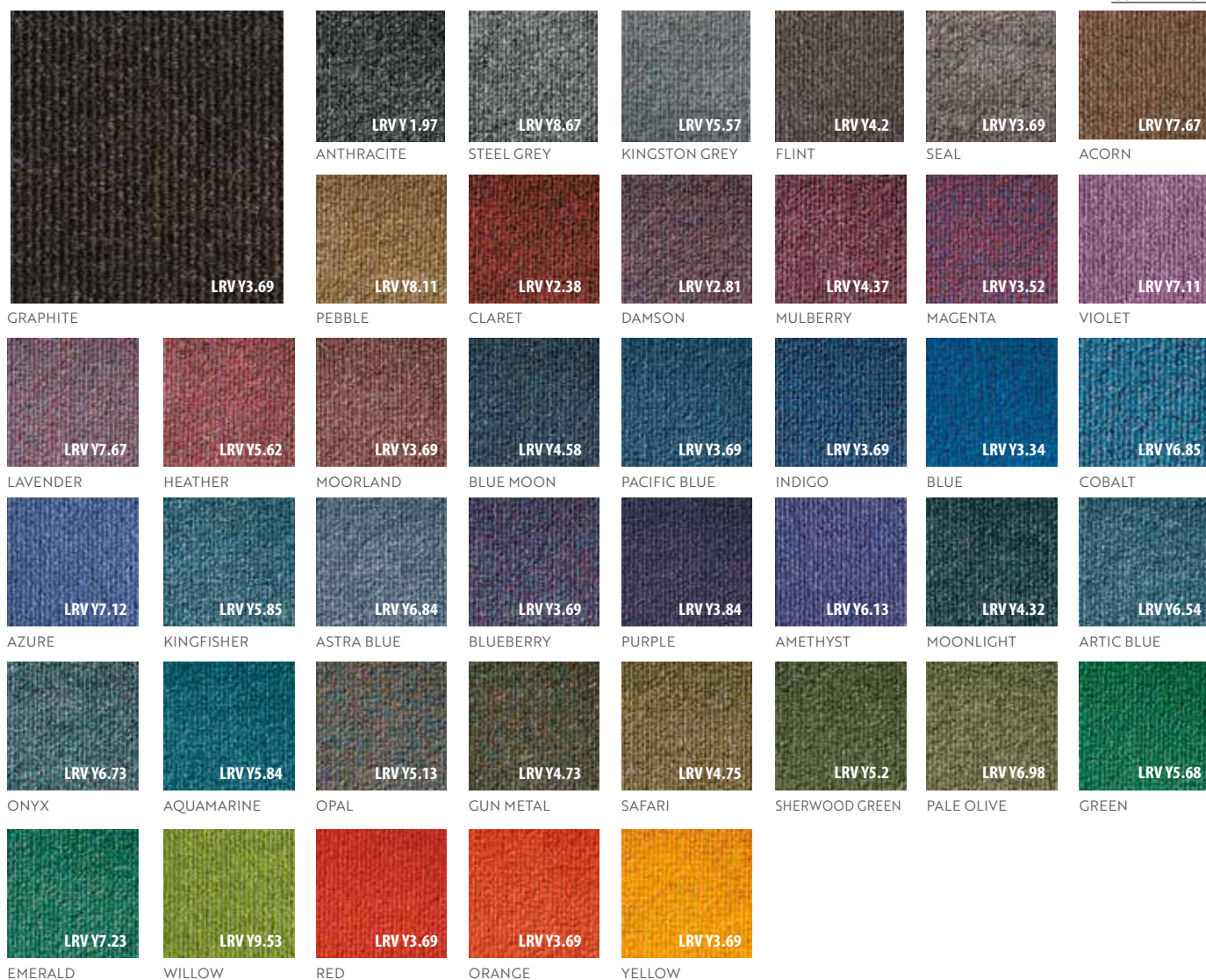







SUPACORD



Supacord is a heavy contract fibre bonded floorcovering and can be found in education, universities, libraries, apartment block communal areas, office environments, retail outlets, and public sector buildings.



SPECIFICATION	Supacord			10 YEAR WEAR WARRANTY
Fibre Construction (Sheet)	80% Polypropylene, 15% Polyamide, 5% Recycled Polyester			
Fibre Construction (Tile)	80% Polypropylene, 15% Polyamide, 5% Recycled Polyester			
Colour Fastness	Light (BS EN ISO 105:B02) 6 Wet Rubbing (BS EN ISO 105:BO1) 4-5 Dry Rubbing (BS EN ISO 105:X12) 4-5			
Flammability	BS5287 Assessment and labelling of Textile Floorcoverings tested to BS4790 (Hot Metal Nut Test) - Low Radius of Char BS EN 13501:2002. Euroclass Cfl-s1 (Sheet) Euroclass Bfl-s1 (Tile)			
Antistatic	Suitable for use in computer rooms			
Impact noise reduction	BS EN ISO 140-8: 19dB (Sheet and Tile)			
Formats	Sheet 	Tile 	Plank 	
Backing	-	Bitumen	Bitumen	
Special Addition	Available in Cushion / Acoustic Back tiles with result for impact noise reduction BS EN ISO 140-8: 22dB			
Size	2 metre and 4 metre Ribbing runs down Length of roll	50cm x 50cm	25cm x 100cm	
Weight	1020gsm metre ²	4020gsm metre ²	4020gsm metre ²	
Thickness	6.20mm	7.60mm	7.60mm	



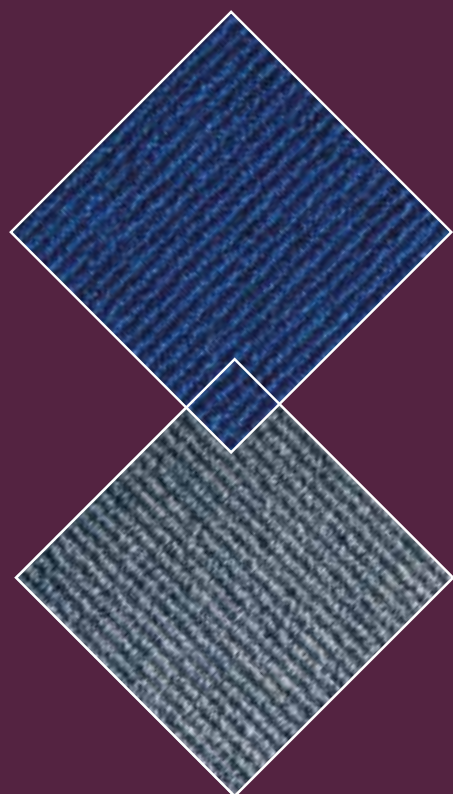




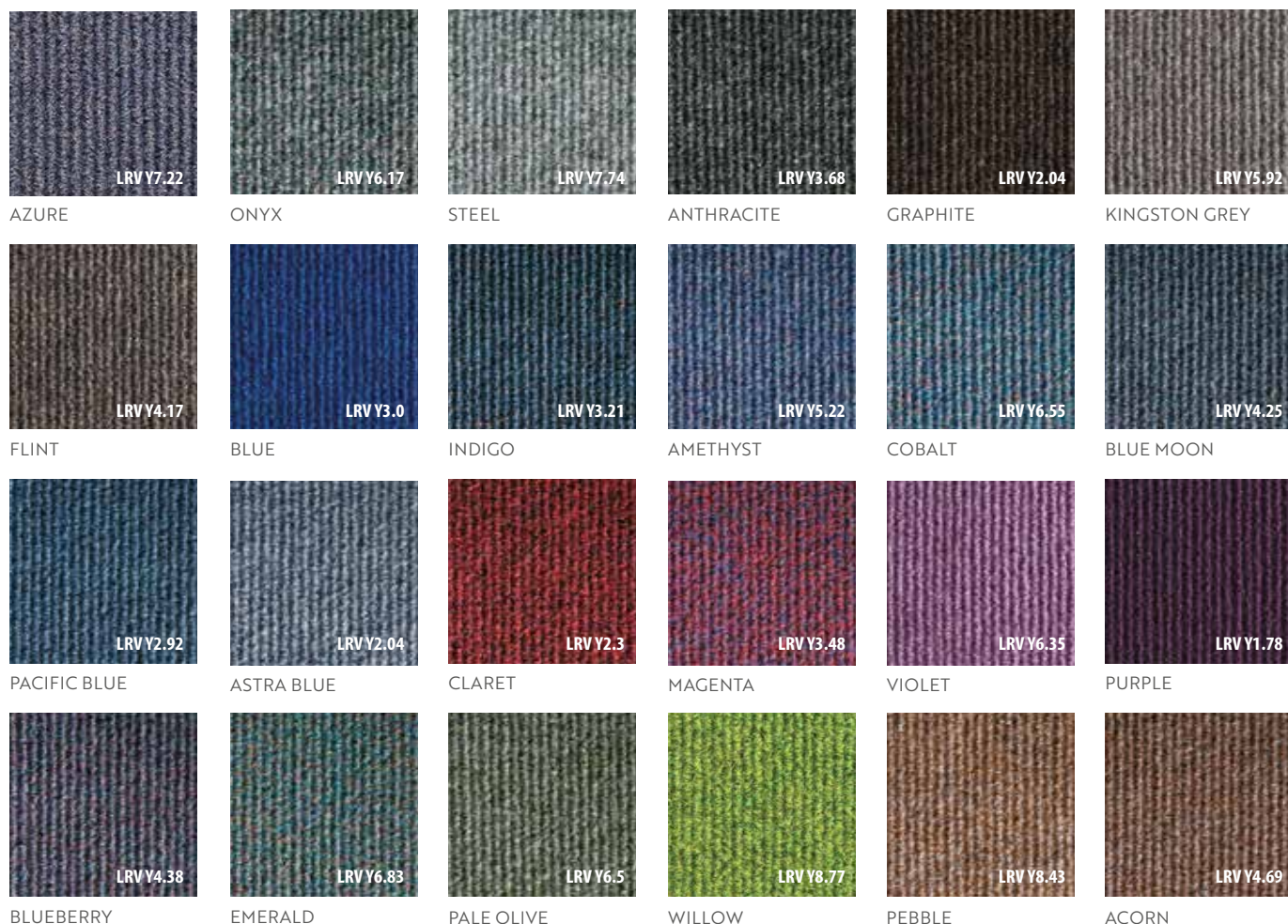
B




BROADRIB

BROADRIB



Broadrib is a heavy contract fibre bonded floorcovering and can be found in education, universities, libraries, apartment block communal areas, office environments, retail outlets, and public sector buildings. It's wider rib structure compared to Supacord, creates a more defined texture within the carpet while enhanced impact noise reduction properties aids building design.



SPECIFICATION	Broadrib			10 YEAR WEAR WARRANTY
Fibre Construction (Sheet)	80% Polypropylene, 15% Polyamide, 5% Recycled Polyester			
Fibre Construction (Tile)	80% Polypropylene, 15% Polyamide, 5% Recycled Polyester			
Colour Fastness	Light (BS EN ISO 105:B02) >6 Wet Rubbing (BS EN ISO 105:BO1) 5 Dry Rubbing (BS EN ISO 105:X12) 5			
Flammability	BS5287 Assessment and labelling of Textile Floorcoverings tested to BS4790 (Hot Metal Nut Test) - Low Radius of Char BS EN 13501:2002 Euroclass Cfl-s1 (Sheet) Euroclass Cfl-s1 (Tile) Euroclass Cfl-s1 (Plank)			
Antistatic	Suitable for use in computer rooms			
Impact Noise Reduction	BS EN ISO 140-8: 20dB (Sheet)			
Formats	Sheet 	Tile 	Plank 	
Backing	-	Bitumen	Bitumen	
Special Addition	Available in Cushion / Acoustic Back tiles with result for impact noise reduction BS EN ISO 140-8: 25dB			
Size	2m & 4m	50cm x 50cm	25cm x 100cm	
Weight	1020gsm metre ²	4020gsm metre ²	4020gsm	
Thickness	7.50mm	8mm	8mm	



BREEAM® 'A+' Rated

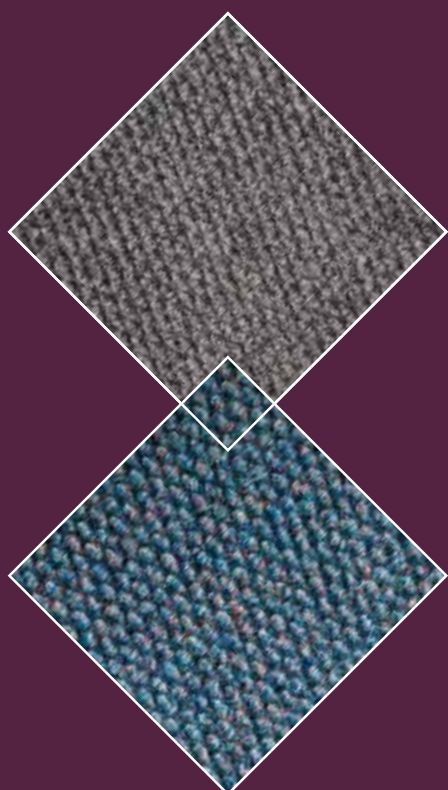


BROADRIB





HOBNAIL



Hobnail is a heavy contract fibre bonded floorcovering and can be found in education, universities, libraries, apartment block communal areas, office environments, retail outlets, and public sector buildings. Ideal in communal areas
non-directional pattern.



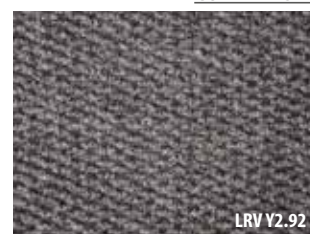
CHARCOAL



ANTHRACITE



FLINT



STEEL



SEAL



PACIFIC BLUE



BLUE



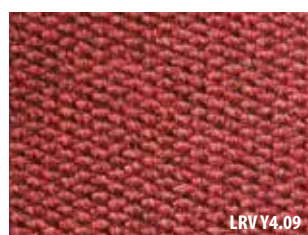
COBALT



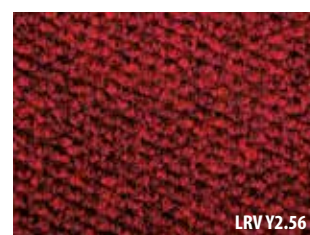
AMETHYST



AZURE



ARABIAN RED



CLARET



PURPLE





GREEN

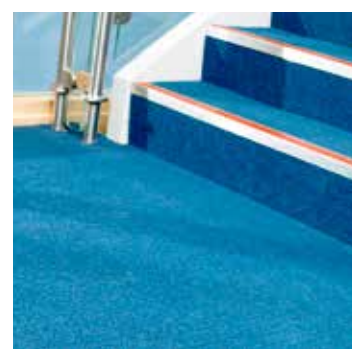


SHERWOOD



PEBBLE

SPECIFICATION		Hobnail	10 YEAR WEAR WARRANTY
Fibre Construction (Sheet)	80% Polypropylene, 15% Polyamide, 5% Recycled Polyester		
Fibre Construction (Tile)	80% Polypropylene, 15% Polyamide, 5% Recycled Polyester		
Colour Fastness	Light (BS EN ISO 105:B02) 6 Wet Rubbing (BS EN ISO 105:BO1) 5 Dry Rubbing (BS EN ISO 105:X12) 5		
Flammability	BS5287 Assessment and labelling of Textile Floorcoverings tested to BS4790 (Hot Metal Nut Test) - Low Radius of Char BS EN 13501:2002 Euroclass Cfl-s1 (Sheet) Euroclass Bfl-s1 (Tile)		
Antistatic	Suitable for use in computer rooms		
Reduction in Impact Noise	BS EN ISO 140-8: 18dB		
Formats	Sheet 	Tile 	
Backing	-	Bitumen	
Size	2 metre	50cm x 50cm	
Weight	1020gsm metre ²	4020gsm metre ²	
Thickness	7.20mm	8mm	

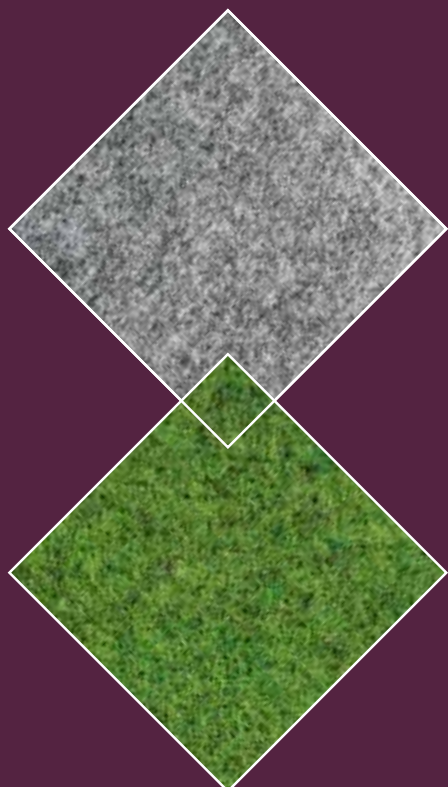




I

IRON DUKE

IRON DUKE



Iron Duke is a heavy contract fibre bonded floorcovering and can be found in education, universities, libraries, apartment block communal areas, retail outlets, and public sector buildings. First manufactured in 1967 this is the original fibre bonded carpet, used by the Ministry of Defence as a trusted floorcovering.



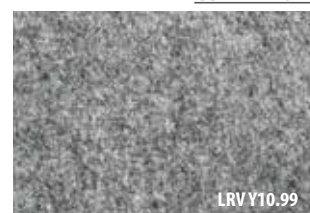
ANTHRACITE



CHARCOAL



FLINT



DOVE GREY



PETROL BLUE



BLUE MOON



BLUE



AMETHYST



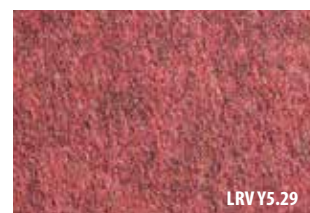
PURPLE



BLUEBERRY



CLARET



ARABIAN RED



LINCOLN GREEN





WILLOW



CHESTNUT



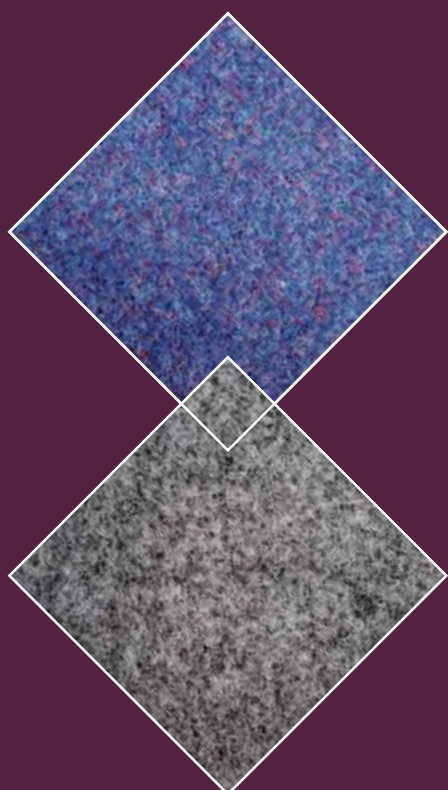
PEBBLE

SPECIFICATION		Iron Duke	10 YEAR WEAR WARRANTY
Fibre Construction (Sheet)	80% Polypropylene, 10% Polyamide, 10% Recycled Polyester		
Fibre Construction (Plank)	80% Polypropylene, 10% Polyamide, 10% Recycled Polyester		
Colour Fastness	Light (BS EN ISO 105:B02) > 6 Wet Rubbing (BS EN ISO 105:BO1) 4-5 Dry Rubbing (BS EN ISO 105:X12) 4-5		
Flammability	BS5287 Assessment and labelling of Textile Floorcoverings tested to BS4790 (Hot Metal Nut Test) - Low Radius of Char BS EN 13501:2002 Euroclass Dfl-s1 (Sheet) Euroclass Bfl-s1 (Plank)		
Antistatic	Suitable for use in computer rooms		
Reduction in Impact Noise	BS EN ISO 140-8: 18dB		
Formats	Sheet 	Plank 	
Backing	-	Bitumen	
Size	2 metre and 4 metre	25cm x 100cm	
Weight	750gsm metre ²	3750gsm metre ²	
Thickness	4.75mm	6.0mm	



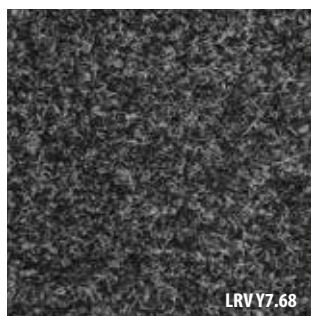


WELLINGTON VELOUR



Wellington Velour is a heavy contract fibre bonded floorcovering and can be found in education, universities, libraries, apartment block communal areas, office environments, retail outlets, and public sector buildings.

Combining a soft velour texture and high-traffic performance, creates a more defined texture within the carpet while enhanced impact noise reduction properties aids building design.



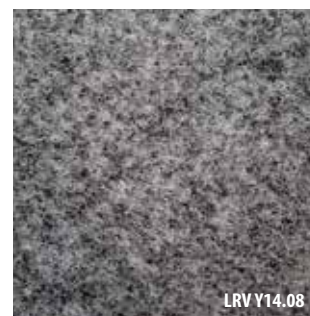
ANTHRACITE



CHARCOAL



KINGSTON GREY



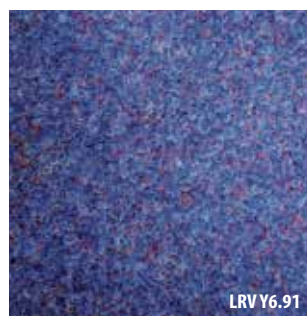
DOVE GREY



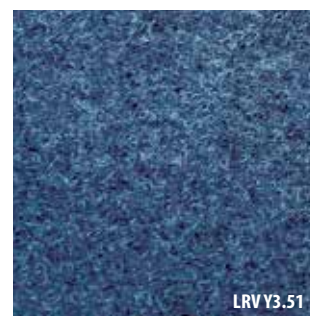
MARINE



PETROL BLUE



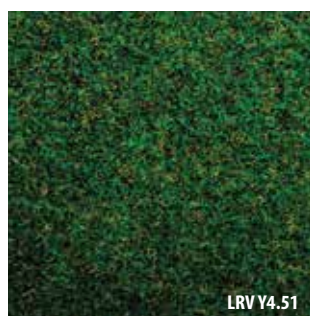
AMETHYST



SAPPHIRE



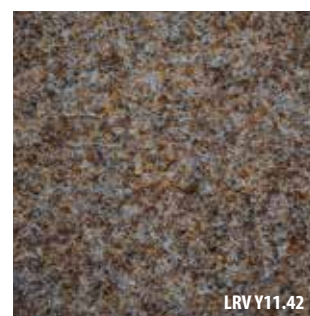
TEAL BLUE





LINCOLN GREEN



CLARET



PEBBLE

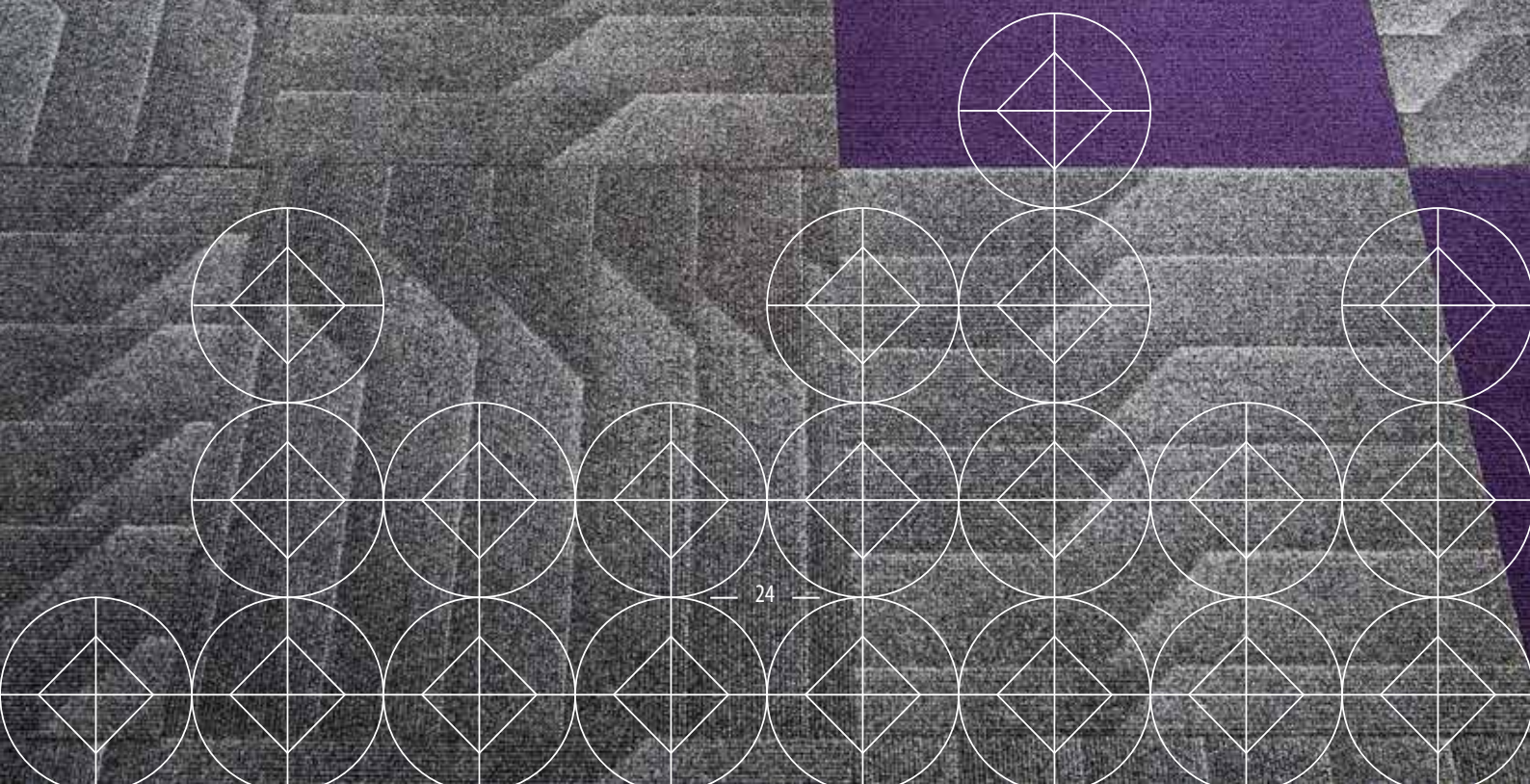
SPECIFICATION	Wellington Velour		10 YEAR WEAR WARRANTY
Fibre Construction (Sheet)	90% Polypropylene 10% Recycled Polyester		
Fibre Construction (Tile)	90% Polypropylene 10% Recycled Polyester		
Colour Fastness	Light (BS EN ISO 105:B02) > 6 Wet Rubbing (BS EN ISO 105:BO1) 5 Dry Rubbing (BS EN ISO 105:X12) 5		
Flammability	BS5287 Assessment and labelling of Textile Floorcoverings tested to BS4790 (Hot Metal Nut Test) - Low Radius of Char Efl-sl (Sheet) Euroclass Bfl-sl (Tile)		
Antistatic	Suitable for use in computer rooms		
Reduction in Impact Noise	BS EN ISO 140-8: 24dB		
Formats	Sheet 	Tile 	
Backing	-	Bitumen	
Size	2 metre	50x50cm	
Weight	1180gsm metre ²	4180gsm metre ²	
Thickness	10mm	11.20mm	





CREATIVE RANGE

ODYSSEY
ARRAY
MONTAGE
NIGHT SKY





- BRITISH MADE
- WILL NOT RAVEL OR FRAY
- THERMAL PROPERTIES CONSERVE HEAT
- ACOUSTIC PROPERTIES REDUCE NOISE POLLUTION
- LOW MAINTENANCE COSTS
- LOW INSTALLATION COSTS

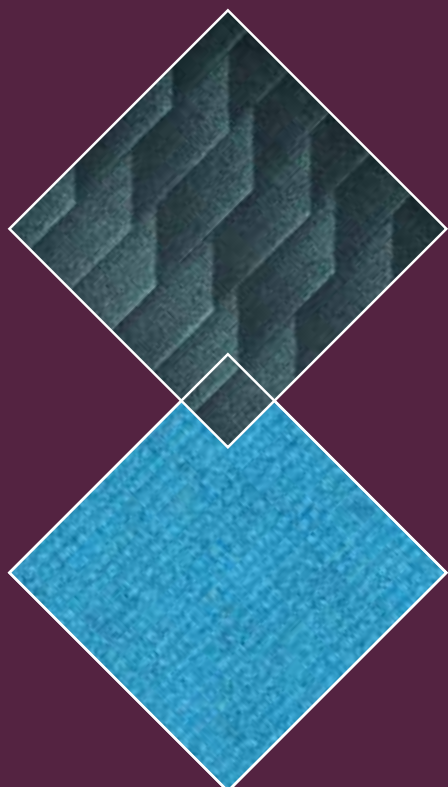


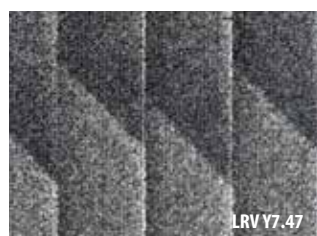


ODYSSEY

Unique to the fibre bonded sector.

Odyssey is bold and modern. Ideal for commercial and education environments. Use the full 42 colourbank of Supacord to enhance your Odyssey design.





ODYSSEY ANTHRACITE



ODYSSEY GRAPHITE



ODYSSEY KINGSTON GREY



ODYSSEY INDIGO



SUPACORD ANTHRACITE



SUPACORD GRAPHITE



SUPACORD KINGSTON GREY



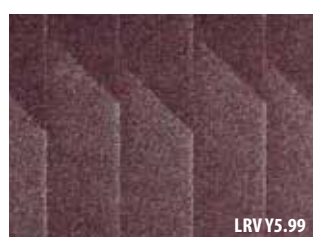
SUPACORD INDIGO



ODYSSEY PACIFIC BLUE



ODYSSEY BLUEBERRY



ODYSSEY MULBERRY



ODYSSEY PEACOCK



SUPACORD PACIFIC



SUPACORD BLUEBERRY



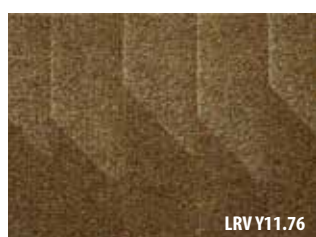
SUPACORD MULBERRY



SUPACORD PEACOCK



ODYSSEY LIME



ODYSSEY PEBBLE



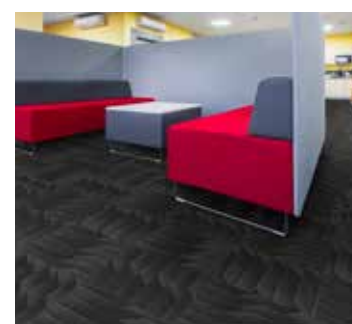
SUPACORD WILLOW



SUPACORD PEBBLE

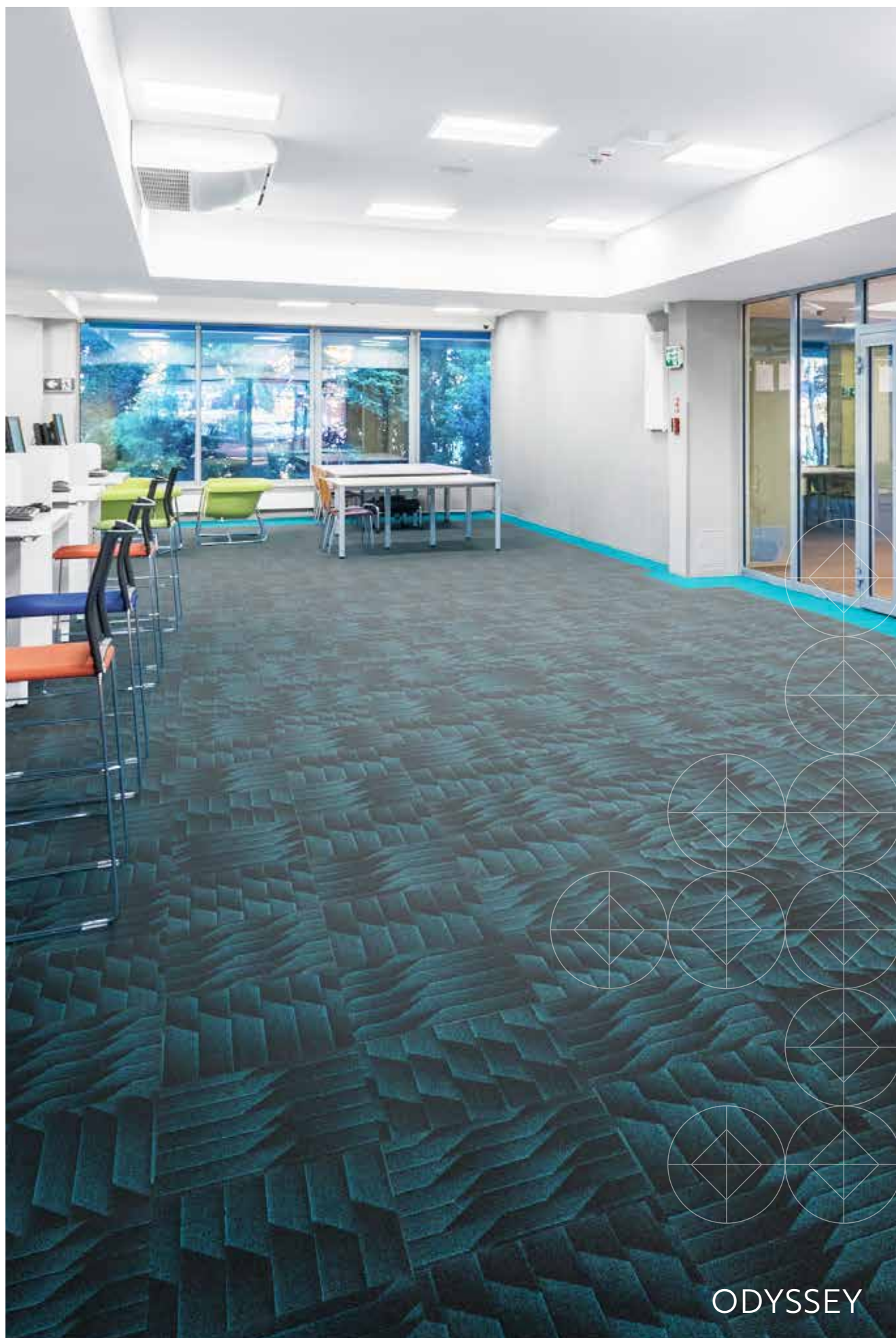


SPECIFICATION	Odyssey	10 YEAR WEAR WARRANTY
Fibre Construction	84% Polypropylene, 16% Nylon,	
Colour Fastness	Light (BS EN ISO 105:B02) > 6 Wet Rubbing (BS EN ISO 105:BO1) 5 Dry Rubbing (BS EN ISO 105:X12) 5	
Flammability	BS EN 13501 Euroclass Bfl-s1 (Tile)	
Anti-Static	Suitable for use in computer rooms	
Impact Noise Reduction	BS EN ISO 140-8: 20dB	
Backing	Bitumen	
Size	50cm x 50cm	
Weight	4200gsm metre ²	
Thickness	8.5mm	





ODYSSEY GRAPHITE





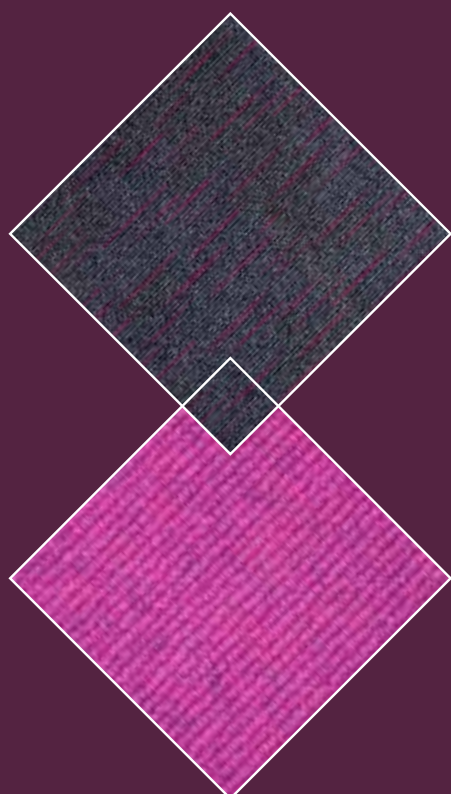
ODYSSEY ANTHRACITE
SUPACORD - ACCENT COLOUR PURPLE



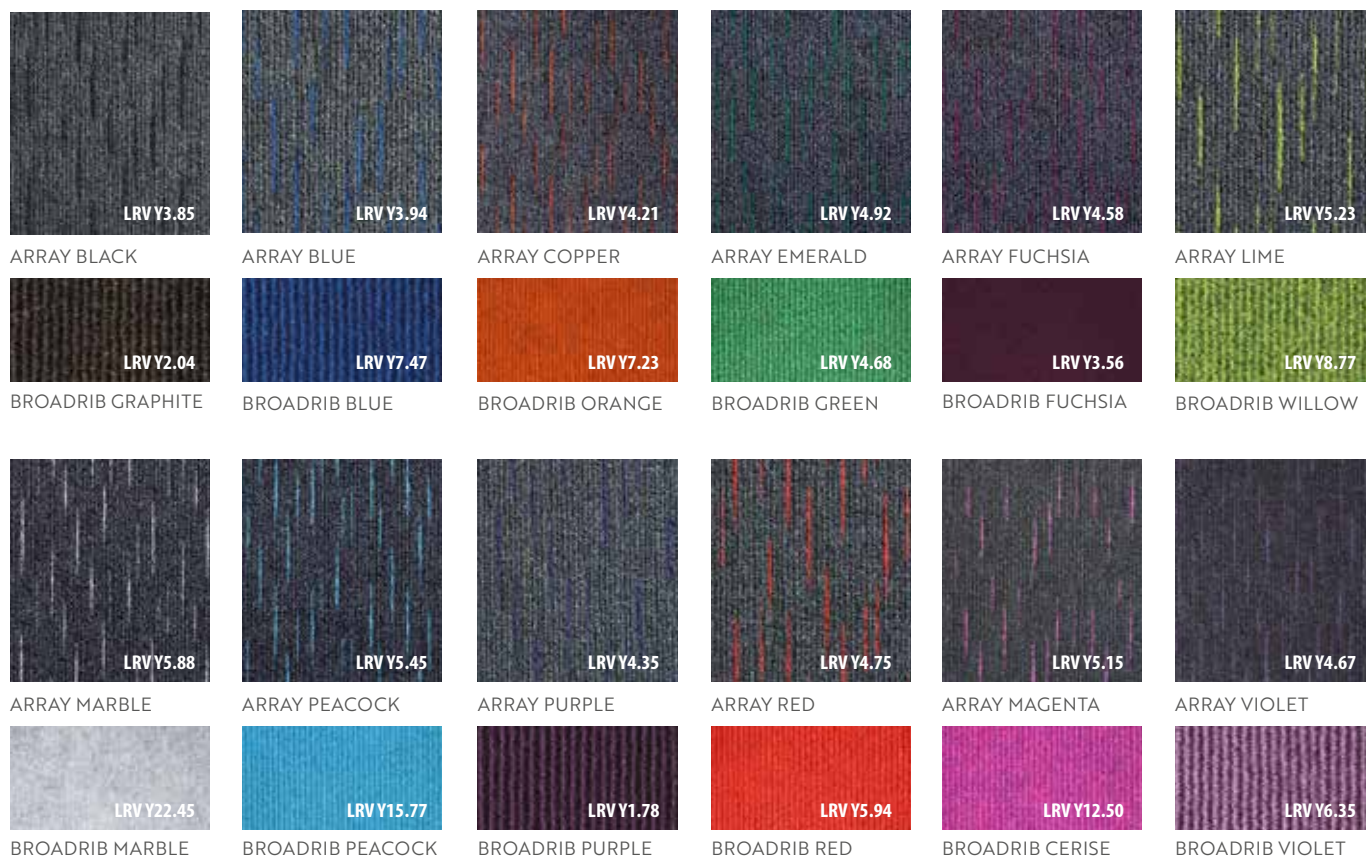






ARRAY



Array is a heavy contract fibre bonded floorcovering with a smart linear pattern in a choice of twelve vibrant shades, team with the twelve Broadrib highlight colourways for effective design options. Array can be found in education, universities, libraries, apartment block communal areas, office environments, retail outlets, and public sector buildings. Array's enhanced impact noise reduction properties aids building design.



SPECIFICATION	Array		10 YEAR WEAR WARRANTY
Fibre Construction (Sheet)	85% Polypropylene, 15% Polyamide,		
Fibre Construction (Plank)	85% Polypropylene, 15% Polyamide,		
Colour Fastness	Light (BS EN ISO 105:B02) > 6 Wet Rubbing (BS EN ISO 105:BO1) 4-5 Dry Rubbing (BS EN ISO 105:X12) 4-5		
Flammability	BS EN 13501 Euroclass Bfl-s1 (Tile) Euroclass Cfl-s1 (Plank) Euroclass Bfl-s1 (Sheet)		
Antistatic	Suitable for use in computer rooms		
Impact noise reduction	BS EN ISO 140-8: 22dB (Tile)		
Formats	Tile 	Plank 	
Backing	Bitumen	Bitumen	
Size	50cm x 50cm	25cm x 100cm	
Weight	4075gsm	4075gsm	
Thickness	8.5mm	8.5mm	



BREEAM® 'A+' Rated



ARRAY



ARRAY



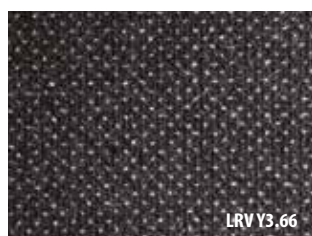
ARRAY

**M**

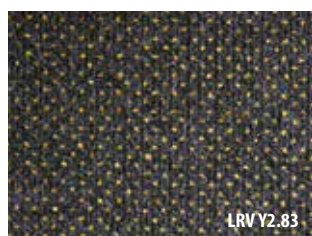
MONTAGE

MONTAGE

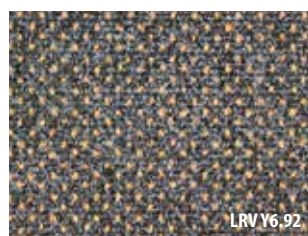
Montage is a heavy contract fibre bonded floorcovering and can be found in education, universities, apartment block communal areas, libraries, office environments, retail outlets, and public sector buildings. Montage's enhanced impact noise reduction properties aids building design.



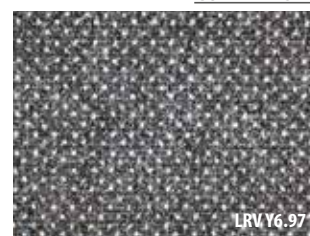
ANTHRACITE



FLINT



GRANITE



SLATE



SAPPHIRE



INDIGO



PACIFIC BLUE



COBALT



MAGENTA



CLARET



RUBY



CERISE



PLUM





BLUEBERRY



TURQUOISE



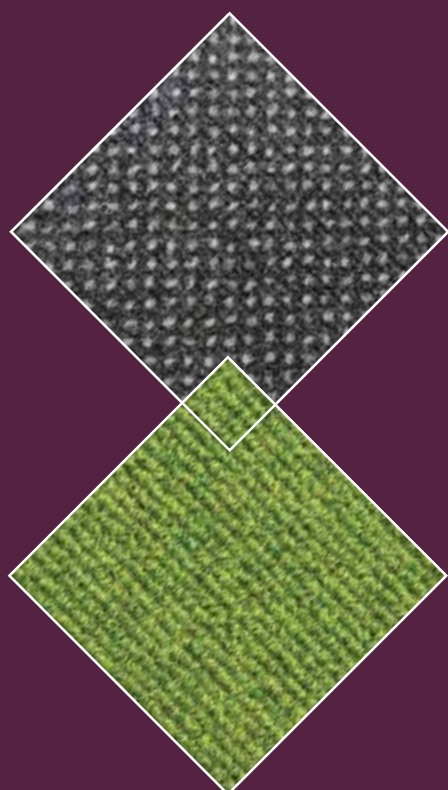
BRONZITE

SPECIFICATION	Montage		10 YEAR WEAR WARRANTY
Fibre Construction (Sheet)	45% Polypropylene, 30% Polyamide, 25% Modacrylic		
Fibre Construction (Tile)	85% Polypropylene, 15% Polyamide (Tile)		
Colour Fastness	Light (BS EN ISO 105:B02) > 6 Wet Rubbing (BS EN ISO 105:BO1) 4-5 Dry Rubbing (BS EN ISO 105:X12) 4-5		
Flammability	(BS5287) Assessment and labelling of Textile BS EN 13501 Euroclass Cfl-s1 (Sheet) Euroclass Bfl-s1 (Tile)		
Antistatic	Suitable for use in computer rooms		
Impact Noise Reduction	BS EN ISO 140-8: 21dB		
Formats	Tile 	Sheet 	
Backing	Bitumen	Bitumen	
Size	50cm x 50cm	4metre only.	
Weight	4075gsm	1075gsm	
Thickness	8.50mm	7.50mm	

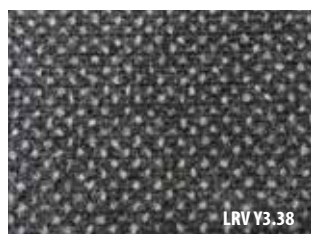
BREEAM® 'A+' Rated



NIGHT SKY



Night Sky is a heavy contract fibre bonded floorcovering and can be found in education, universities, apartment block communal areas, libraries, office environments, retail outlets, and public sector buildings. Night Sky's enhanced impact noise reduction properties aids building design.



LRV Y3.38

NIGHT SKY STEEL



LRV Y3.24

NIGHT SKY BLUE



LRV Y4.64

NIGHT SKY COPPER



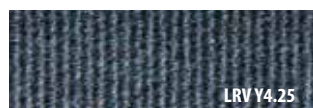
LRV Y4.64

NIGHT SKY EMERALD



LRV Y7.74

BROADRIB STEEL



LRV Y4.25

BROADRIB BLUE MOON



LRV Y7.23

BROADRIB ORANGE



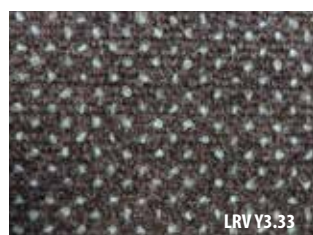
LRV Y4.68

BROADRIB GREEN



LRV Y3.24

NIGHT SKY VIOLET



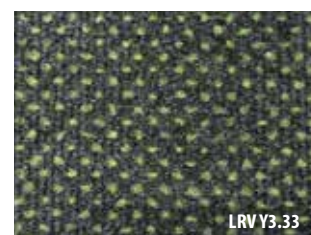
LRV Y3.33

NIGHT SKY PEACOCK



LRV Y2.88

NIGHT SKY RED



LRV Y3.33

NIGHT SKY LIME



LRV Y6.35

BROADRIB VIOLET



LRV Y15.77

BROADRIB PEACOCK



LRV Y4.64

BROADRIB RED



LRV Y8.77

BROADRIB WILLOW



LRV Y3.24

NIGHT SKY FUCHSIA



LRV Y3.56

BROADRIB FUCHSIA

SPECIFICATION	Night Sky	10 YEAR WEAR WARRANTY
Fibre Construction	77% Polypropylene, 15% Polyamide, 8% Recycled Polyester	
Colour Fastness	Light (BS EN ISO 105:B02) > 6 Wet Rubbing (BS EN ISO 105:BO1) 4-5 Dry Rubbing (BS EN ISO 105:X12) 4-5	
Flammability	(BS5287) Assessment and labelling of Textile Floorcoverings tested to BS4790 BS EN 13501: 2002 Euroclass Cfl-s1	
Anti-Static	Suitable for use in computer rooms	
Impact Noise Reduction	BS EN ISO 140-8: 21dB	
Backing	Bitumen	
Size	50cm x 50cm	
Weight	4075gm metre ²	
Thickness	8.55mm	



ENTRANCE & TRANSITION AREA RANGE

BATTLESHIP/HIPPO
DREADNOUGHT
DIAMOND
VANQUISHER
ZEPHYR
STICKS & STONES

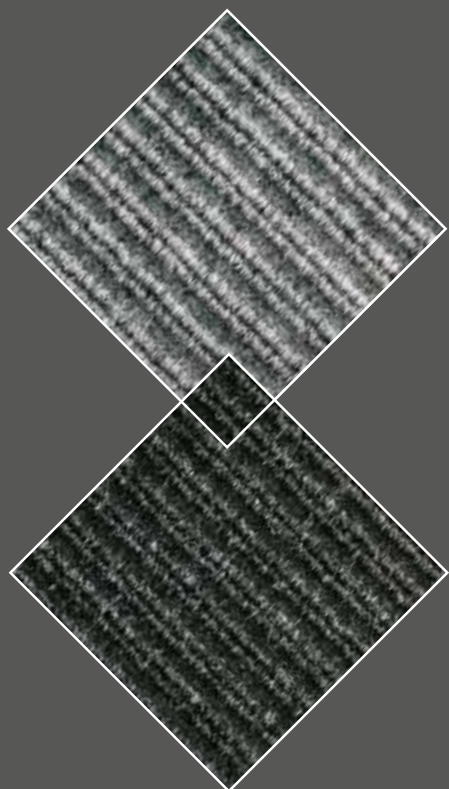


- BRITISH MADE
- SPECIALLY DESIGNED FOR ENTRANCE AREAS
- WILL NOT RAVEL OR FRAY
- THERMAL PROPERTIES CONSERVE HEAT
- ACOUSTIC PROPERTIES REDUCE NOISE POLLUTION
- LOW MAINTENANCE COSTS
- LOW INSTALLATION COSTS



BH
BATTLESHIP
HIPPO

BATTLESHIP/HIPPO



Battleship and Hippo are heavy contract entrance solutions, used extensively in education and public sector buildings as well as entrance transition areas for apartment blocks. In addition, Hippo has a rubber waffle backing, allowing it to be loose laid in small areas or footwells.



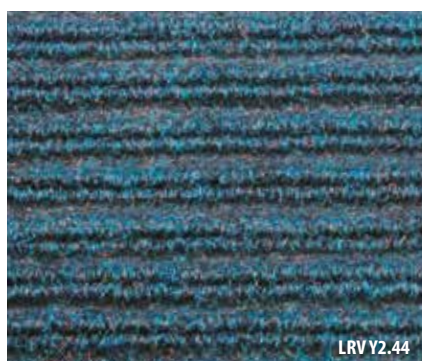
ANTHRACITE



ASH GREY



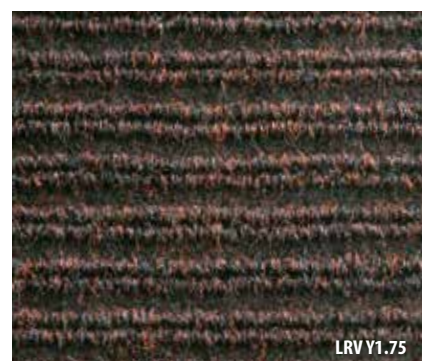
SLATE



INDIGO



BLUE



BROWN



HEATH

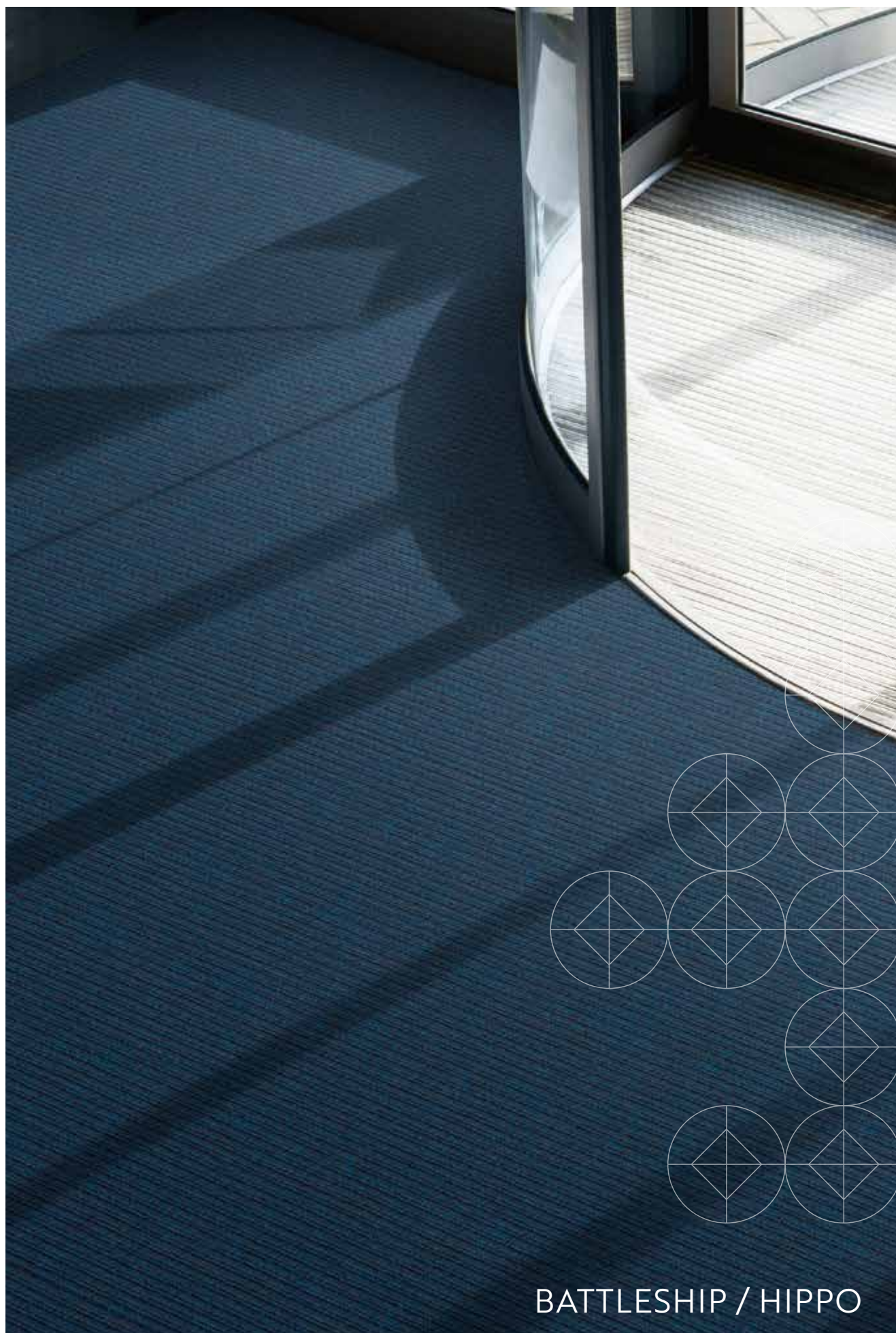


PEBBLE

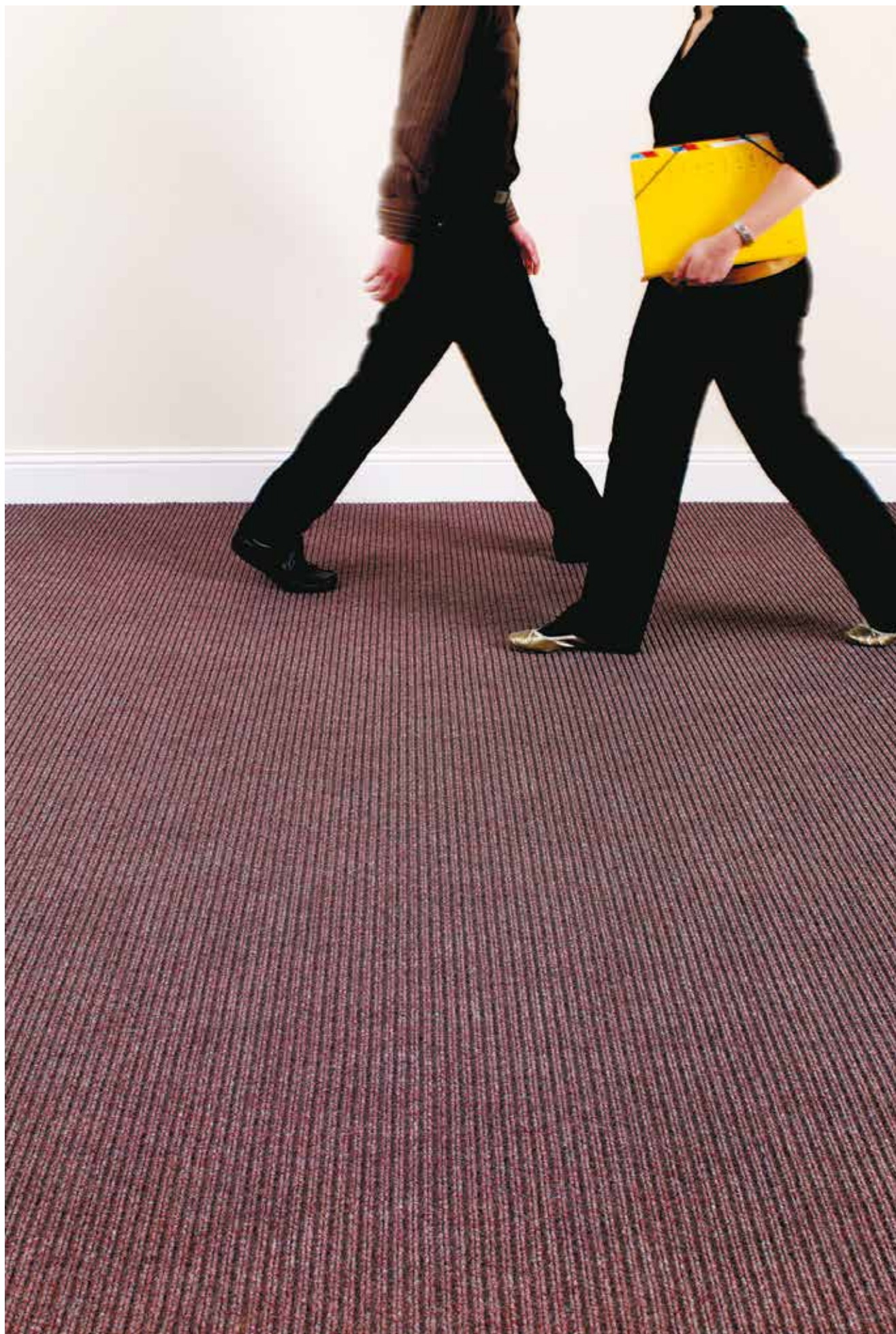


SPECIFICATION	Battleship / Hippo
Fibre Construction	90% Polypropylene 10% Recycled Polyester
Colour Fastness	Light (BS EN ISO 105:B02) 6 Wet Rubbing (BS EN ISO 105:BO1) 4-5 Dry Rubbing (BS EN ISO 105:X12) 4-5
Flammability	(BS6307) Methenamine Pill Test - Pass BS EN 13501 Euroclass Efl (Sheet)
Formats	Sheet
Backing	Rubber Waffle (Hippo) / (unbacked) Battleship
Size	2 metre and 4 metre. Ribbing runs down length of roll
Weight	1495gm metre ² (Battleship) 2380gm metre ² (Hippo)
Thickness	10.50mm (Battleship) 12mm (Hippo)





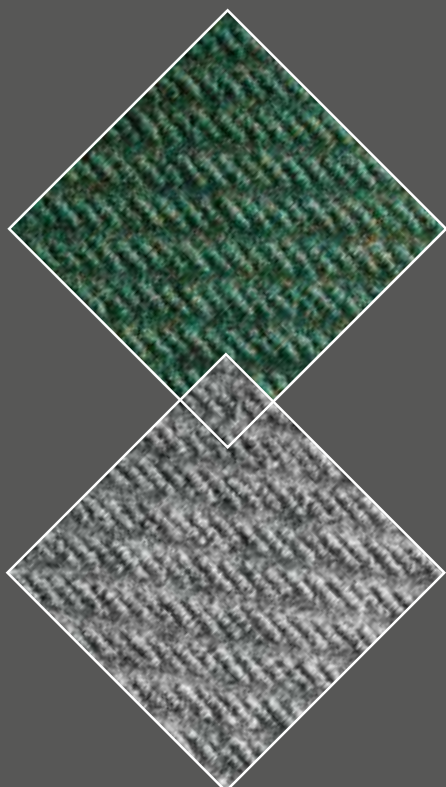
BATTLESHIP / HIPPO



**D**

DREADNOUGHT

DREADNOUGHT



A prominent, heavy contract, diagonal-ribbed texture results in a highly durable surface, a popular choice for use in schools, colleges, universities and offices as well as entrance transition areas for apartment blocks. Suitable for use in golf clubs.



ANTHRACITE



SLATE



ASH GREY





INDIGO



LINCOLN GREEN



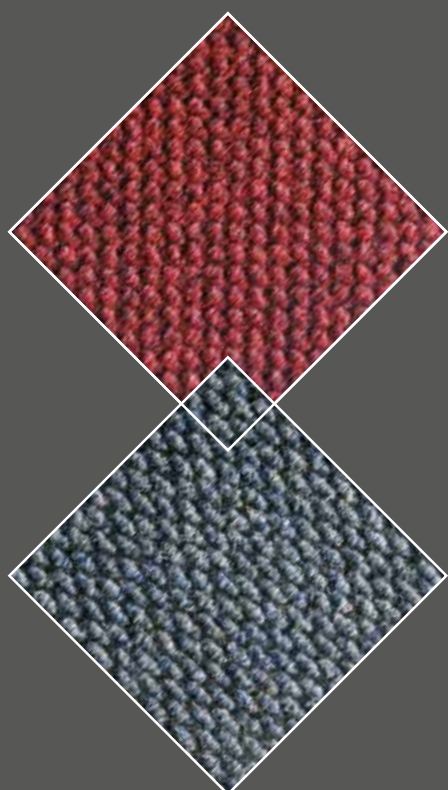
FIESTA

SPECIFICATION	Dreadnought	
Fibre Construction (Sheet)	90% Polypropylene, 10% Recycled Polyester (Sheet) 90% Polypropylene, 10% Recycled Polyester (Tile)	
Colour Fastness	Light (BS EN ISO 105:B02) 6 Wet Rubbing (BS EN ISO 105:BO1) 4-5 Dry Rubbing (BS EN ISO 105:X12) 4-5	
Flammability	(BS6307) Methenamine Pill Test - Pass BS EN 13501 Euroclass Efl (Sheet) BS EN 13501 Euroclass Efl (Tile)	
Format	Tile 	Sheet 
Backing	Bitumen	-
Size	50cm x 50cm	2 metre. Ribbing runs diagonally down the length of the roll.
Weight	3994gm metre ²	1494gm metre ²
Thickness	11.5mm	11mm





DIAMOND



A prominent, heavy contract, diagonal-ribbed texture results in a highly durable surface, a popular choice for use in schools, colleges, universities and offices as well as entrance transition areas for apartment blocks. Suitable for use in golf clubs.

SHEET



LRV Y4.15

GREEN



LRV Y3.11

RED



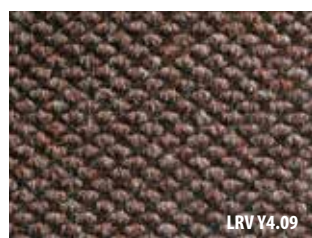
LRV Y2.16

DOLPHIN BLUE



LRV Y3.91

BANK GREY



LRV Y4.09

CHOCOLATE



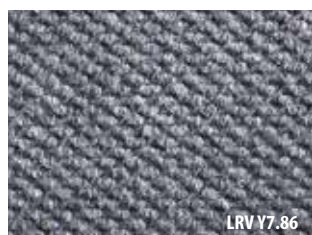
LRV Y4.36

SCARLET



LRV Y5.86

MOORLAND



LRV Y7.86

LAGOON

SHEET AND TILE



LRV Y2.11

CHARCOAL



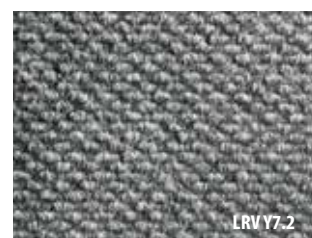
LRV Y2.62

INDIGO



LRV Y6.2

EMERALD



LRV Y7.2

SILVER





LRV Y6.09

CRYSTAL BLUE



LRV Y8.64

BEIGE

SPECIFICATION	Diamond	
Fibre Construction	85% Polypropylene, 15% Recycled Polyester (Sheet) 85% Polypropylene, 15% Recycled Polyester (Tile)	
Colour Fastness	Light (BS EN ISO 105:B02) >6 Wet Rubbing (BS EN ISO 105:BO1) 5 Dry Rubbing (BS EN ISO 105:X12) 5	
Flammability	(BS6307) Methenamine Pill Test - Pass BS EN 13501 Euroclass Efl (Sheet) BS EN 13501 Euroclass Efl (Tile)	
Formats	Tile 	Sheet 
Backing	Bitumen	Rubber Waffle
Size	50cm x 50cm	2 metre
Weight	4400gm metre ²	2500gm metre ²
Thickness	11mm	10.50mm



VANQUISHER



Vanquisher carpet is heavy contract and provides an alternative rib and velour surface pattern, specifically designed for use in entrance areas.

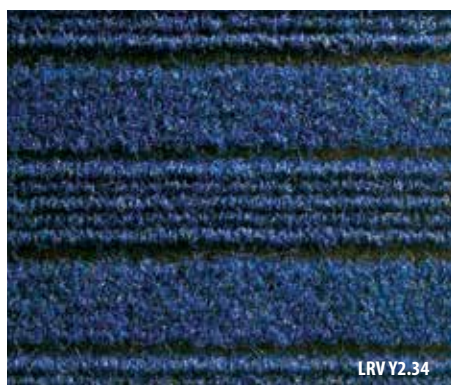
Available in four colours, Vanquisher carpet is used extensively in schools, colleges and universities, as well as retail, commercial environments and as entrance transition areas for apartment blocks.



CHARCOAL



ONYX



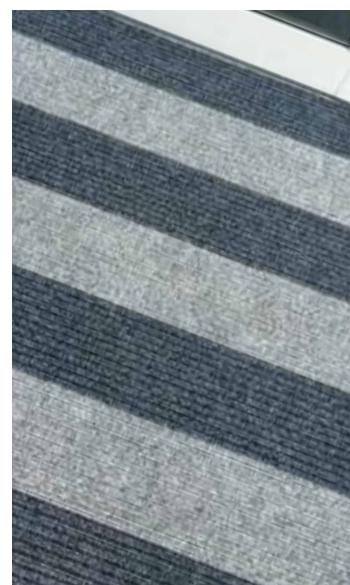
DEEP BLUE



KINGFISHER

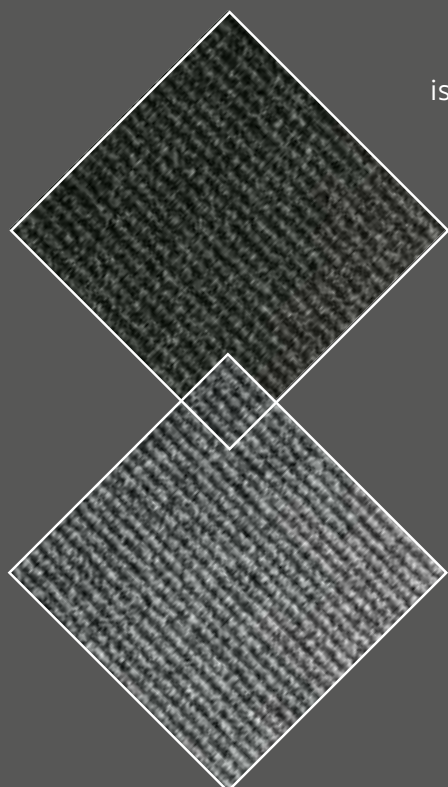


SPECIFICATION	Vanquisher
Fibre Construction	100% Polypropylene
Colour Fastness	Light (BS EN ISO 105:B02) 6 Wet Rubbing (BS EN ISO 105:BO1) 5 Dry Rubbing (BS EN ISO 105:X12) 5
Flammability	(BS6307) Methenamine Pill Test - Pass BS EN 13501 Euroclass Efl (Sheet)
Size	2 metre. Ribbing runs down length of roll (Sheet)
Weight	1470gsm metre ²
Thickness	11.50mm





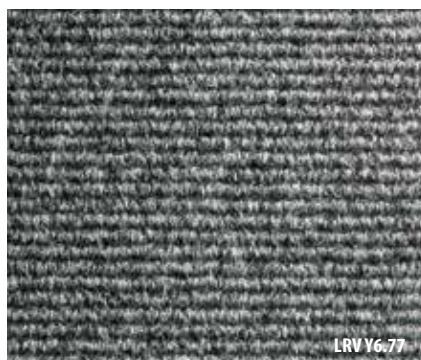
ZEPHYR



Manufactured with a heavier weight fibre, heavy contract **Zephyr** is an enhanced hard-wearing carpet that can be installed in entrances, corridors and transition areas. Suitable for use in golf clubs.



CHARCOAL





SILVER



INDIGO



FELDON GOLF CLUB

SPECIFICATION	Zephyr	
Fibre Construction	85% Polypropylene, 15% Recycled Polyester (Sheet) 85% Polypropylene, 15% Recycled Polyester (Tile)	
Colour Fastness	Light (BS EN ISO 105:B02) 6 Wet Rubbing (BS EN ISO 105:BO1) 5 Dry Rubbing (BS EN ISO 105:X12) 5	
Flammability	BS6307 Methanamine Pill Test - Pass Euroclass Efl (Sheet) Euroclass Efl (Tile)	
Formats	Tile 	Sheet 
Backing	Bitumen	
Size	50cm x 50cm	2 metre. Ribbing runs down length of roll
Weight	4400gm metre ²	1900gm metre ²
Thickness	11mm	10mm





STICKS & STONES

Heavy contract **Sticks & Stones** is an enhanced hard-wearing carpet that can be installed in entrances, corridors and transition areas. Suitable for use in golf clubs.



CHARCOAL



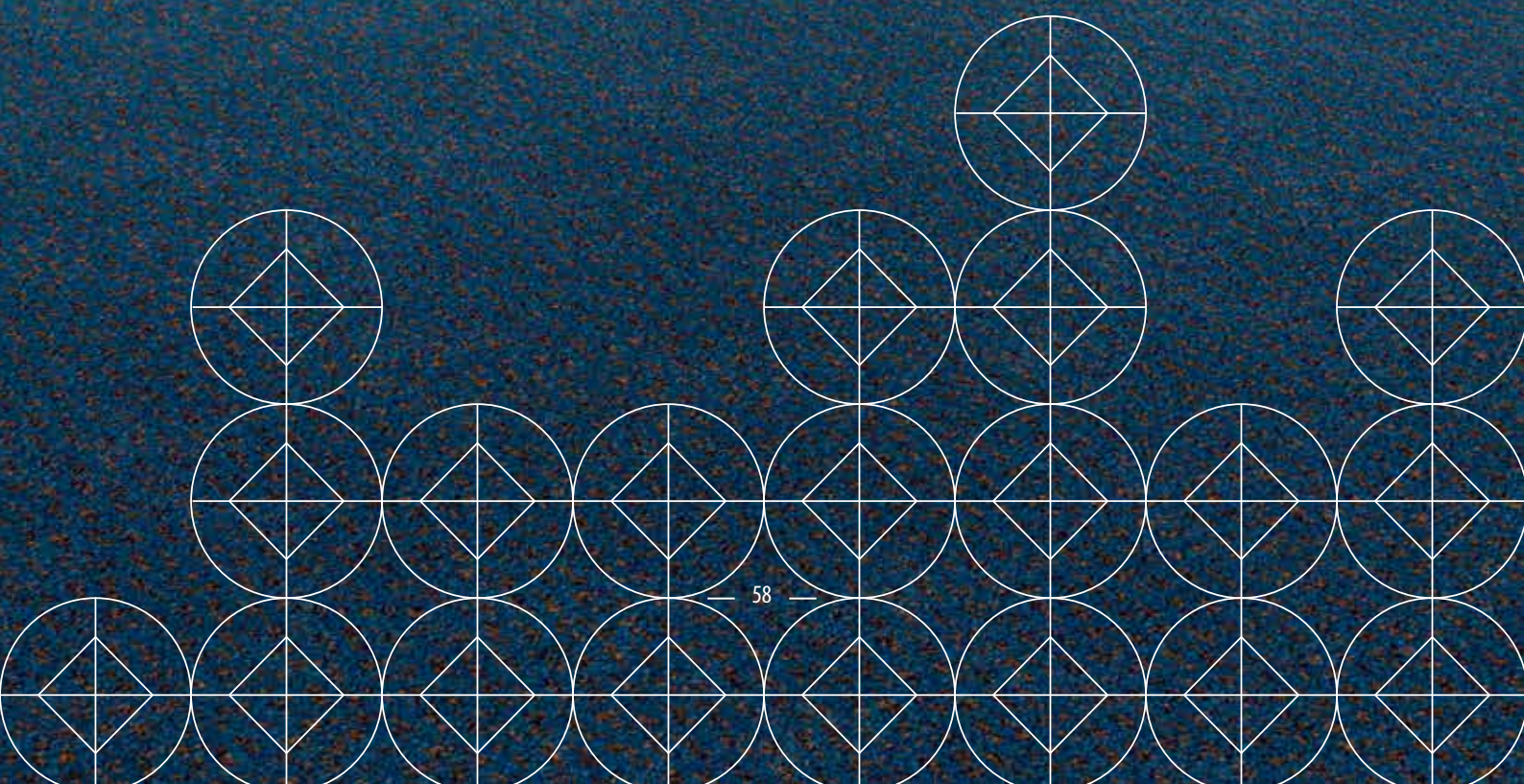
SPECIFICATION	Sticks & Stones
Fibre Construction	85% Polypropylene 15% Recycled Polyester
Colour Fastness	Light (BS EN ISO 105:B02) 6 Wet Rubbing (BS EN ISO 105:BO1) 5 Dry Rubbing (BS EN ISO 105:X12) 5
Flammability	(BS6307) Methanamine Pill Test BS EN 13501 Euroclass Efl (Tile)
Tile Thickness	13mm
Backing	Bitumen
Size	50cm x 50cm
Weight	4625gm metre ²





TUFTED CARPET RANGE

PURE CARE
TOTAL CARE





- LOW INSTALLATION COSTS
- AVAILABLE IN 4 METRE WIDTH
- FULLY IMPERVIOUS BACKING
- POPULAR IN CARE ENVIRONMENTS
- BLEACH RESISTANT
- ANTISTATIC
- HIGHLY RESISTANT TO STAINING

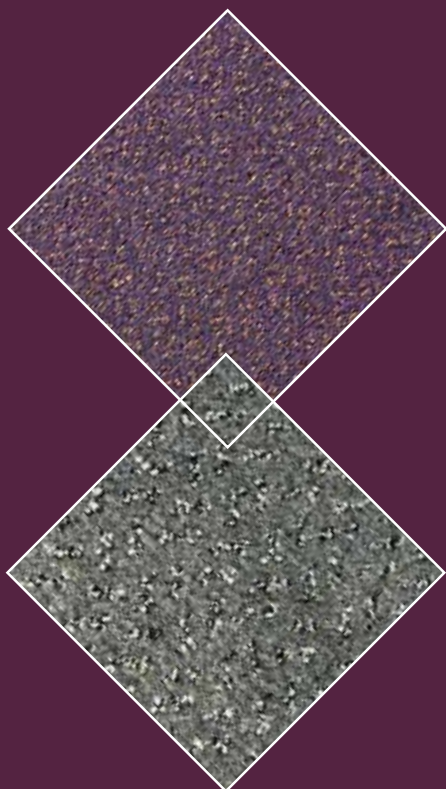




P

PURE CARE

PURE CARE



With a fully impervious backing on a tighter pile, **Pure Care** is a highly stain resistant carpet ideally suited for the full carehome environment.



SAPPHIRE



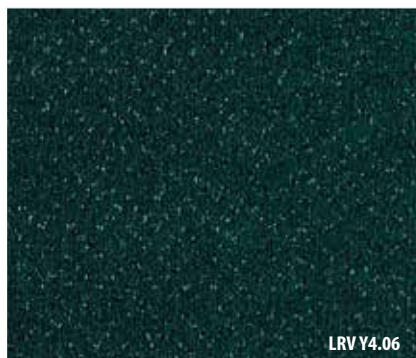
PEARL



JET



AMETHYST



EMERALD



GARNET



TOPAZ



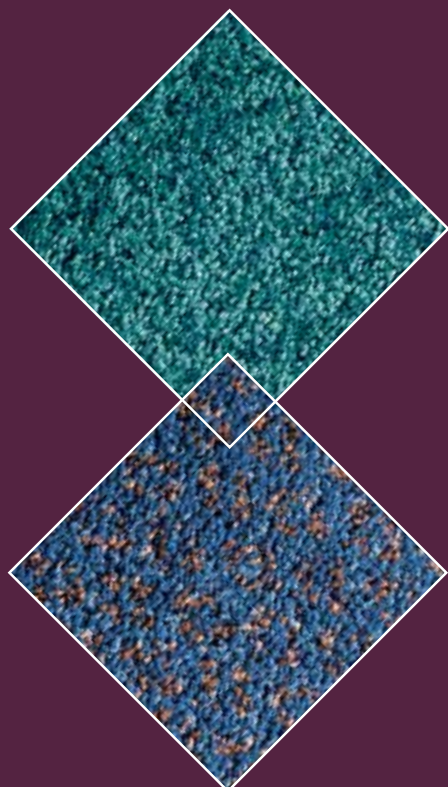
AMBER

SPECIFICATION	Pure Care
Fibre Construction	100% Solution Dyed Polypropylene
Colour Fastness	Light (BS EN ISO 105:B02) 6 Wet Rubbing (BS EN ISO 105:BO1) 5 Dry Rubbing (BS EN ISO 105:X12) 4-5 Bleach (Comraso) 4-5
Flammability	(BS5287) Assessment and labelling of Textile Floorcoverings tested to BS4790 (Hot Metal Nut Test) - Low Radius of Char
Formats	Sheet
Backing	Aqua-Bac Impervious
Impact Noise Reduction	BS EN ISO 140-8:31dB
Electrostatic Propensity	(Walking Test) BS ISO 6356:2000: less than 2.0kv at 25% RH
Impermeability	(Health Care Supply Council Test): Pass
Size	4 metre
Weight	2700gsm
Pile Height	5mm
Thickness	9mm





TOTAL CARE



A Heavy Contract tufted carpet with a fully impervious backing, **Total Care** is ideal for health care environments, or wherever a durable, yet softer finish is required.



BERGAMONT



IRIS



JUNIPER



SMOKE



ORCHID



SPICE

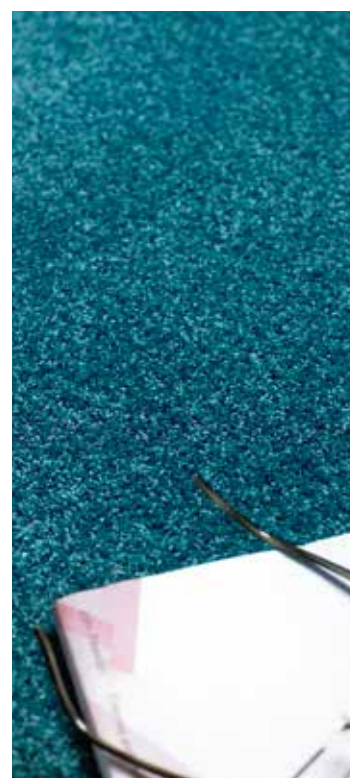


VIOLET



SAFFRON

SPECIFICATION	Total Care	10 YEAR WEAR WARRANTY
Fibre Construction	100% Solution Dyed Polypropylene	
Colour Fastness	Light (BS EN ISO 105:B02) 6 Wet Rubbing (BS EN ISO 105:BO1) 5 Dry Rubbing (BS EN ISO 105:X12) 5 Bleach (Comraso) 5	
Flammability	(BS5287) Assessment and labelling of Textile Floorcoverings tested to BS4790 (Hot Metal Nut Test) - Low Radius of Char	
Formats	Sheet	
Backing	Aqua-Bac Impervious	
Impact Noise Reduction	BS EN ISO 140-8:29dB	
Electrostatic Propensity	(Walking Test) BS ISO 6356:2000: less than 2.0kv at 25% RH	
Impermeability	(Health Care Supply Council Test): Pass	
Size	4 metre	
Weight	3100gsm	
Pile Height	5mm	
Thickness	10mm	





CLASSROOM LOOSE LAY MATS

L
LOOSE LAY
MATS

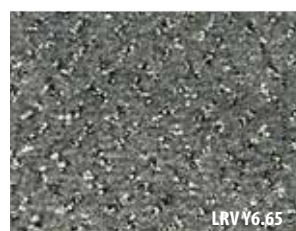
With 20 colourways across 3 ranges the **loose lay classroom range** is ideal for education establishments. In classroom settings the rubber edged mat can be used as a quiet and comfortable reading area, communal play zone or demarcated activities area.



SAPPHIRE



PEARL

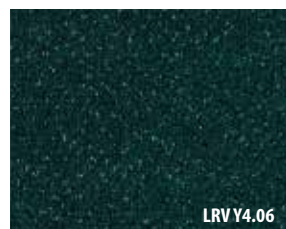


JET



AMETHYST

PURE CARE



EMERALD



GARNET



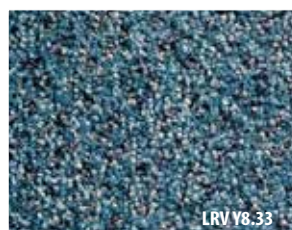
TOPAZ



AMBER



BERGAMONT



IRIS

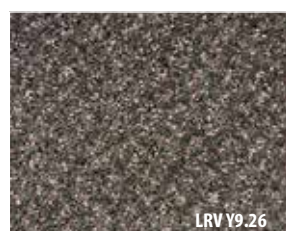


JUNIPER



SMOKE

TOTAL CARE



ORCHID



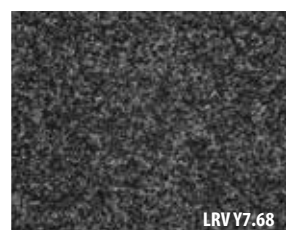
SPICE



VIOLET



SAFFRON



ANTHRACITE



CLARET



SAPPHIRE



LINCOLN GREEN

WELLINGTON

FORMATS

PURE CARE	TOTAL CARE	WELLINGTON WAFFLE BACKED
2.00m x 2.00m	2.00m x 2.00m	2.00m x 2.00m
3.00m x 2.00m	3.00m x 2.00m	3.00m x 2.00m
2.00m x 4.00m	2.00m x 4.00m	2.00m x 4.00m
3.00m x 3.00m	3.00m x 3.00m	3.00m x 3.00m
3.00m x 4.00m	3.00m x 4.00m	3.00m x 4.00m

Classroom mat shown in the image is 3m x 3m.
Please allow for 4cm on each side of the mat for ramped rubber edging.



LOGO ENTRANCE RANGE

Make a lasting impression on clients, patrons or prospective students and create a bespoke carpet design or logo mat for your premises. Emblems, logos or slogans can be incorporated into a loose lay mat or inset into an entrance.



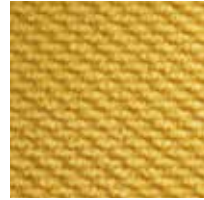
RED



SCARLET



FLAMENCO



YELLOW



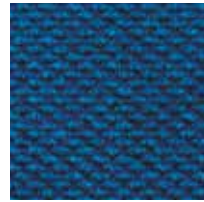
WILLOW



EMERALD



INDIGO



BLUE



AZURE BLUE



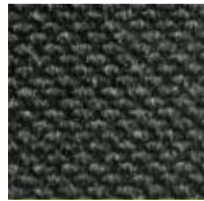
GREEN



CRYSTAL



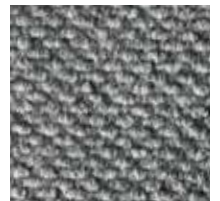
DOLPHIN



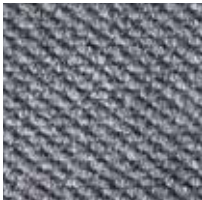
CHARCOAL



BANK GREY



SILVER



LAGOON



CHOCOLATE



BEIGE



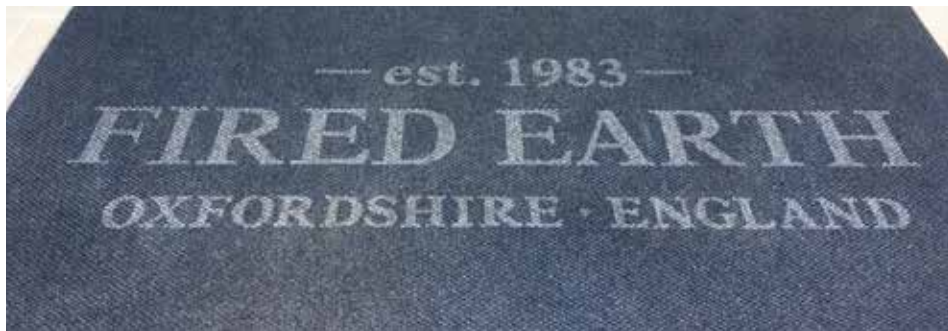
PURPLE



MOORLAND



WHITE



SPECIFICATION		Specialist Carpet Tiles and Mats
Fibre Construction		85% Polypropylene, 15% Recycled Polyester (Diamond Heavy Contract Entrance Area Carpet)
Colour Fastness		Light (BS EN ISO 105:B02) > 6 Wet Rubbing (BS EN ISO 105:B01) 5 Dry Rubbing (BS EN ISO 105:X12) 5
Flammability		(BS 5287) Methenamine Pill Test - Pass BS EN 13501 - Euroclass Efl (Sheet)
Size		Bespoke, contact Heckmondwike
Weight		2550gsm metre ²
Thickness		10.50mm



FUSION TILE

Fusion is the revolutionary new logo and way-finding tile. Use Fusion to brand your logo into a carpet tile or show direction by advising classroom numbers or room locations without additional signage.



Fusion Tiles

Colourways

Available in 5 products across over 100+ colourways

From Fibre Bonded ranges



SUPACORD



BROADRIB



HOBNAIL

and from the Creative Ranges



MONTAGE



ARRAY

ASK FOR A SAMPLE TODAY OR
VISIT: www.heckmondwike-fb.co.uk/download-centre



SPORTS FLOOR PROTECTION - EXPO TILES

Our versatile **Expo Carpet Tiles** allow you to transform a school hall, community centre or school sports hall into a fully-carpeted venue.



BROADRIB ANTHRACITE



BROADRIB STEEL



BROADRIB PACIFIC BLUE



DRAGOON ANTHRACITE



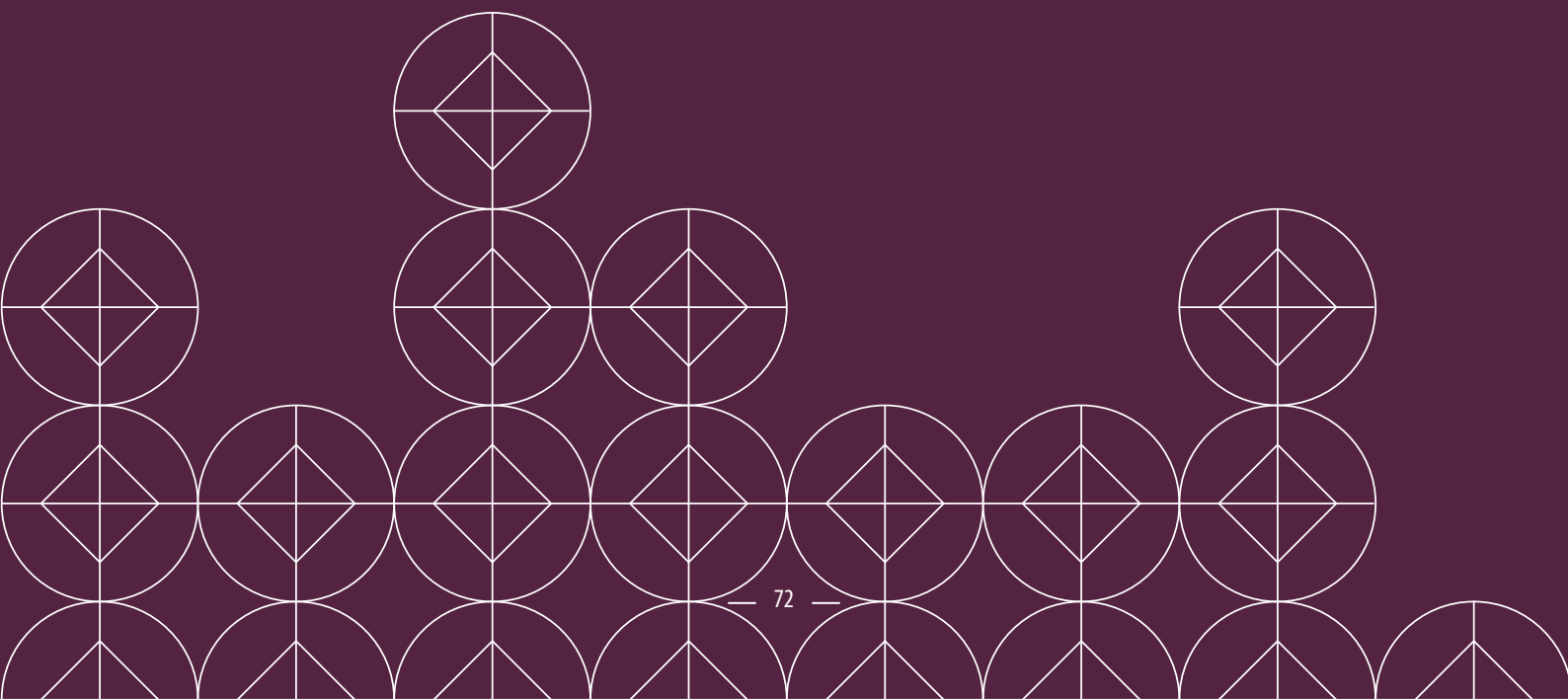
DRAGOON PETROL BLUE

SPECIFICATION	Expo Tiles
Fibre Construction	80% Polypropylene, 15% Polyamide, 5% Recycled Polyester (Broadrib); 90% Polypropylene, 10% Recycled Polyester (Dragoon)
Flammability	(BS 5287) Methenamine Pill Test - Pass BS EN 13501 - Euroclass Efl (Tile)
Backing	PVC (Broadrib) PVC (Dragoon)
Size	2 x 1 metre
Weight	3470gsm (Broadrib) 3625gsm (Dragoon)
Thickness	8mm (Broadrib) 7mm (Dragoon)

Installation does not require adhesive or a professional flooring contractor.
Tiles should be stored flat for optimum performance.



TECHNICAL



You can find the resources for all of our products, from specification data sheets to installation and maintenance guides on our website.

For all information regarding:

NBS PLUS

LIGHT REFLECTANCE

DECLARATION OF PERFORMANCE

QUALITY MANAGEMENT

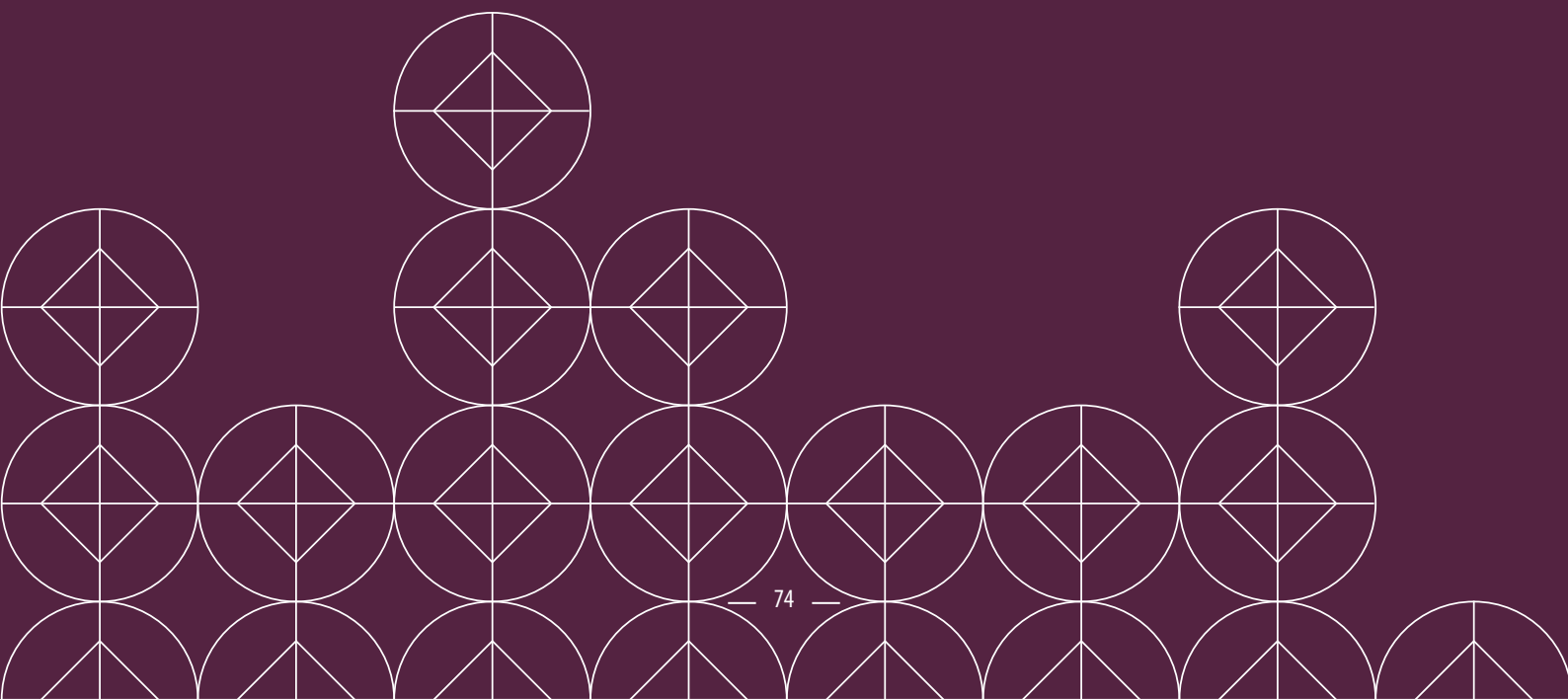
INSTALLATION

CLEANING AND MAINTENANCE

VISIT: www.heckmondwike-fb.co.uk/download-centre



CONTACTS



TECHNICAL

Tel: 01924 413634
Fax: 0800 136769
Email: technical@heckmondwike-fb.co.uk

SALES

Tel: 01924 406161
Fax: 0800 136769
Email: sales@heckmondwike-fb.co.uk

LOGO MATS CONTACT

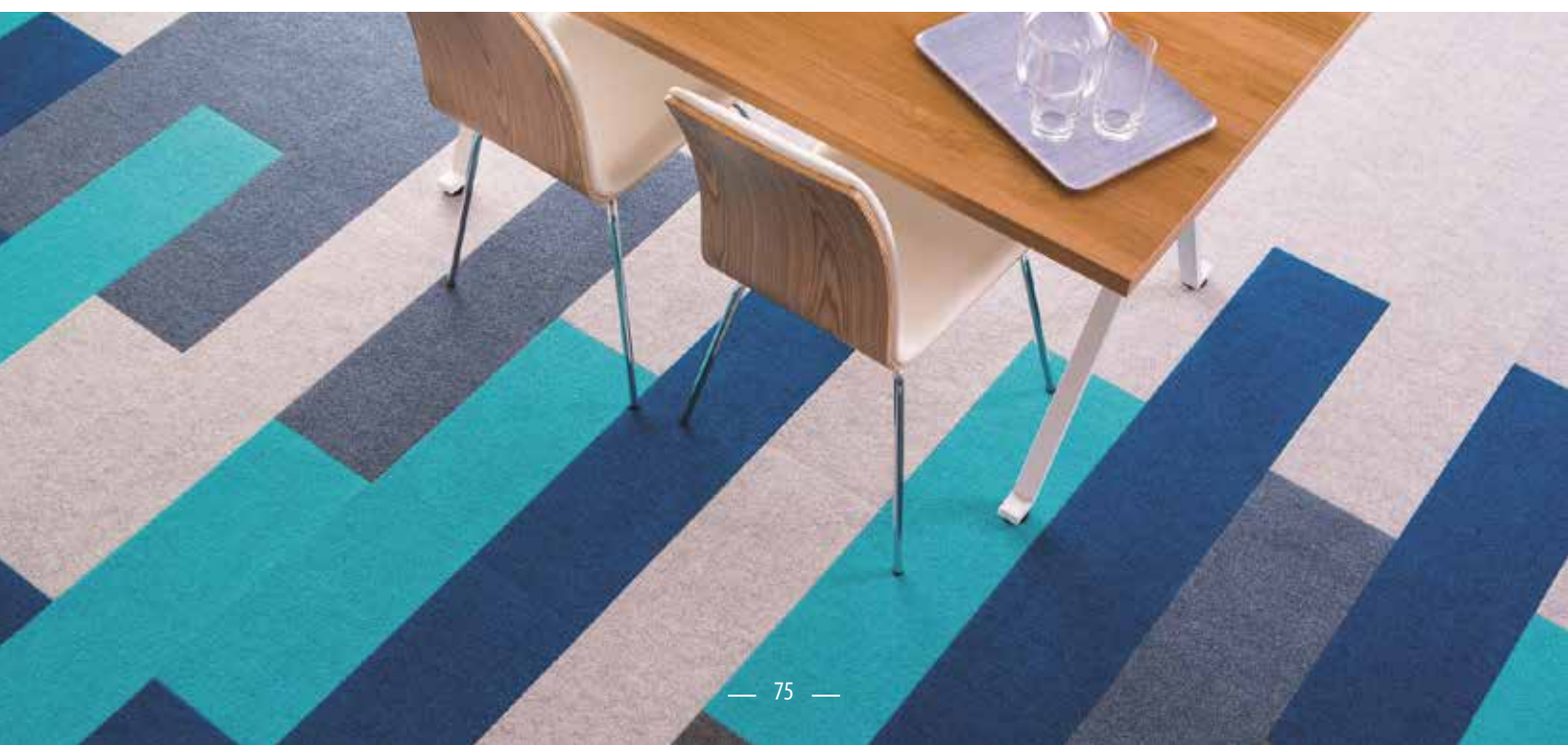
Tel: 01924 406161
Fax: 0800 136769
Email: logodesigns@heckmondwike-fb.co.uk

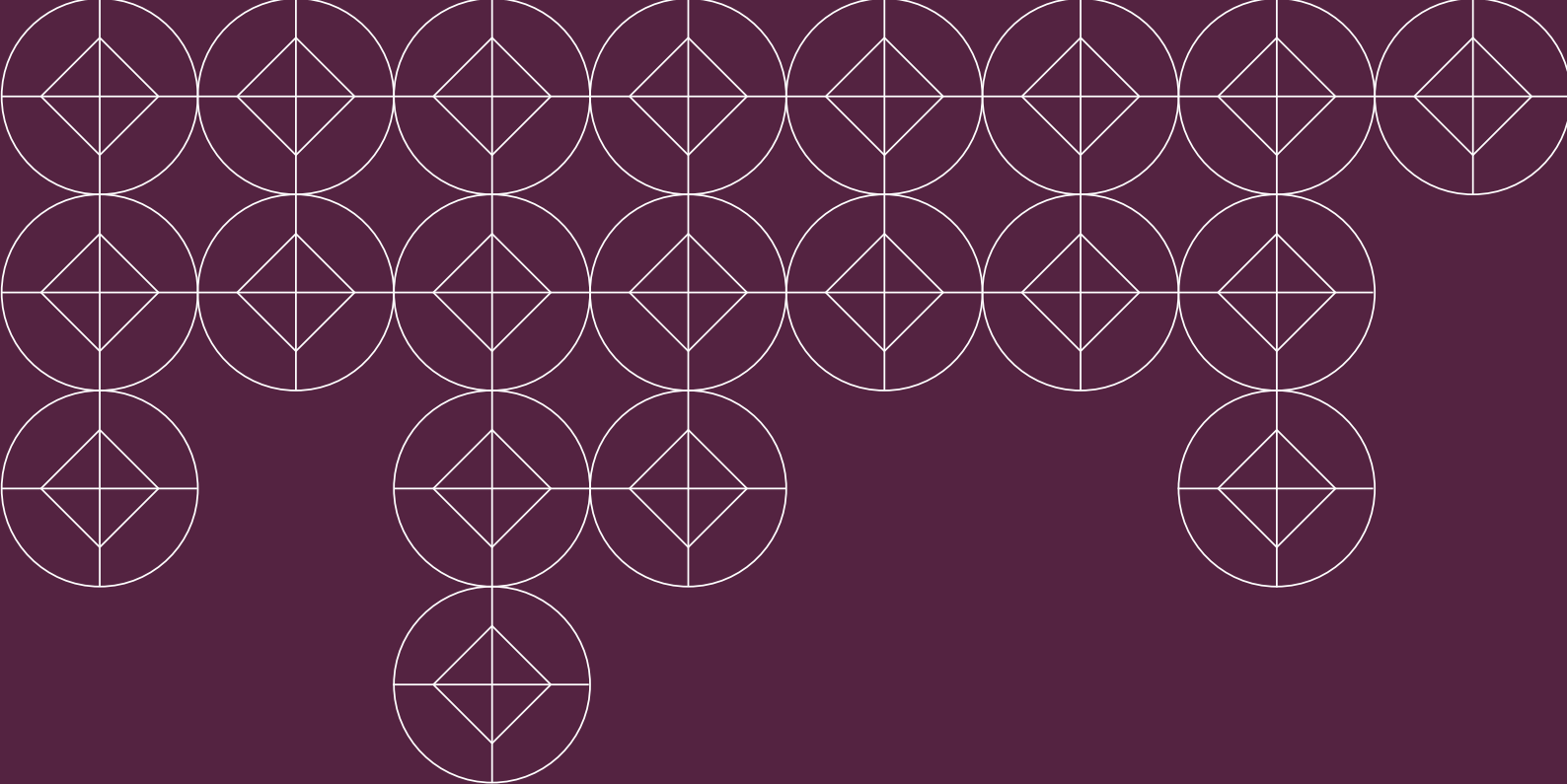
SAMPLES

Tel: 01924 413637
Fax: 0800 136769
Email: samples@heckmondwike-fb.co.uk

MARKETING

Tel: 01924 406161
Fax: 0800 136769
Email: marketing@heckmondwike-fb.co.uk





HECKMONDWIKE

MANUFACTURER OF HEAVY CONTRACT FIBRE BONDED CARPETS

Heckmondwike FB

A division of National Floorcoverings Ltd.
Wellington Mills, Liversedge
West Yorkshire, WF15.

Sales@heckmondwike-fb.co.uk

Sales Office: **01942 406161**

Admin: **01942 410544**

Fax: **0800 136769**

www.heckmondwike-fb.co.uk